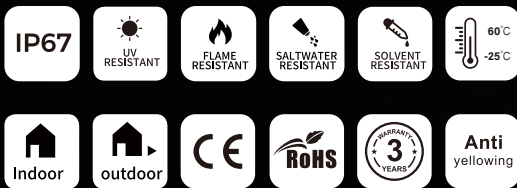
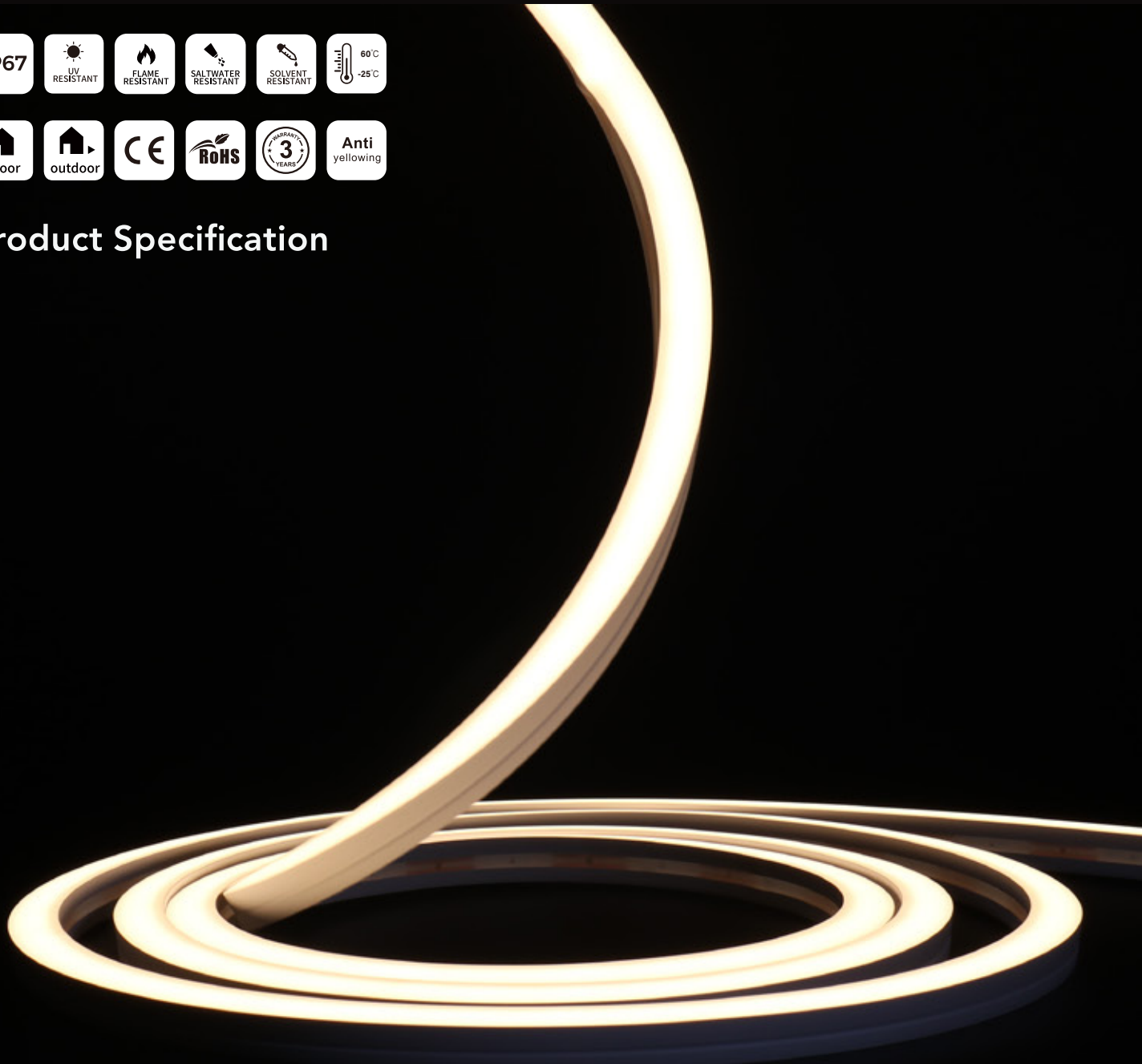


Flex Led Neon Light

# N1615D-SIDE FC-N1615D-SIDE



Product Specification



# LED strip colloid specifications comparison

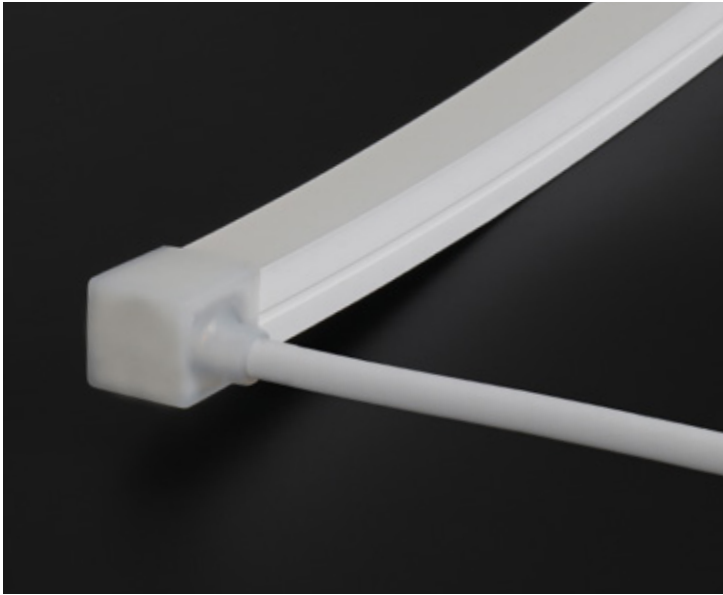
Materials	Silicone flexible led strip	PVC flexible led strip	Notes
Main parameters			
Colloid features in -40°C	No crack after 30 days	Totally cracked	The low temperature resistant of silicone is superior than PVC or epoxy materials
Colloid features in 120°C	No obvious change after 72 hours	Colloid changed into yellow and deformed after 2 hours	The high temperature resistant of silicone is superior than PVC or epoxy
Colloid features in 180°C	No obvious change after 72 hours	Colloid changed into brown and some melted after 20 minutes	Over 150°C, PVC is easily hydrolyzed, Viscosity becomes weaken and easily seperated
Steadily lighted in Seawater for 72 hours	No obvious change	Serious atomization on the surface	The waterproof grade of silicone led strip can reach to IP67, high resistance to acidic alkali and salt properties
Thermal conductivity	Good thermal conductivity	No thermal conductivity	Pvc and epoxy cannot conduct heat, while silicone has good thermal conductivity

## Product features

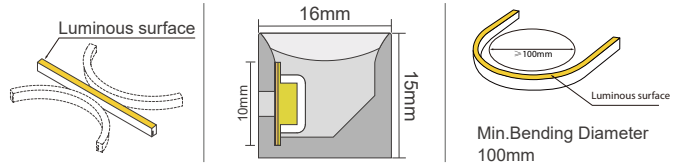
- Anti-yellowing and heat resisting silicone glue, chemical resistance acid and alkaline, available for extremely terrible outdoor environment.
- Uniform and soft luminance, no light spot.
- Super brightness large chip, golden wire welded and copper led holder for quicker heat dissipation, higher stability, longer life span.
- Leadless SMT technique (RoHS certificated), smooth welding joint, firm connection of led and pcb.



# Specification



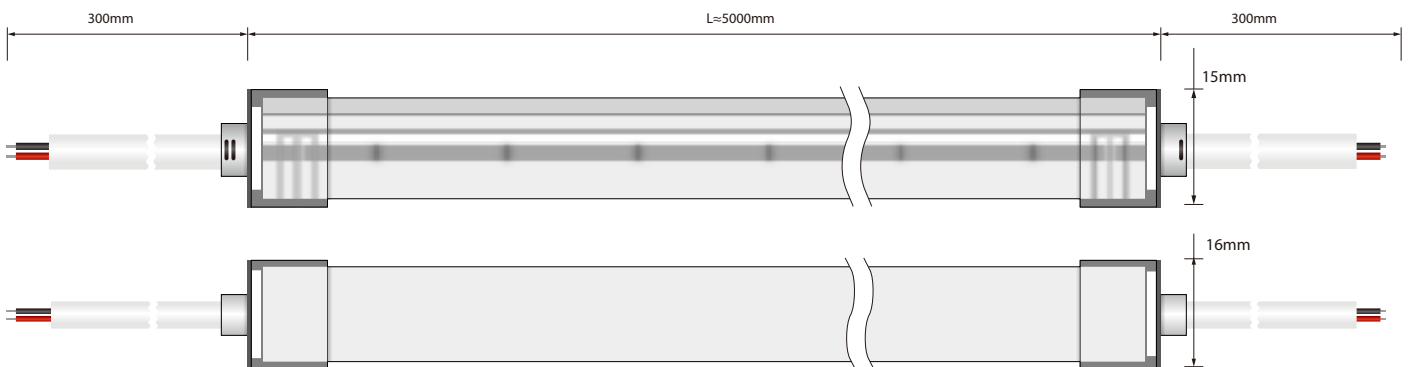
## Bending (Silicone)



- IP67 Protection
- Flame Resistant
- UV Resistant
- Solvents Resistant
- Saltwater Resistant
- Dirt Resistant
- CRI90
- 3 Years Warranty
- Ambient Working  
60°C  
-25°C
- Anti Yellowing

Model Number	N1615D-SIDE	Size (mm)	16*15
PCB Limited (mm)	10mm	IP Grade	IP67
Working Temperature	-25 to 60°C	N.W.(G/M)	300g

## Dimensions of light

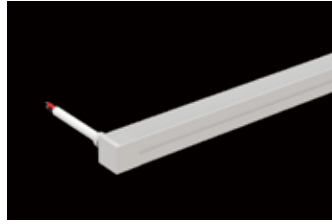


## VARIOUS CONNECTIONS

### Injection molded endcap.



front cable entry



side cable entry



bottom entry

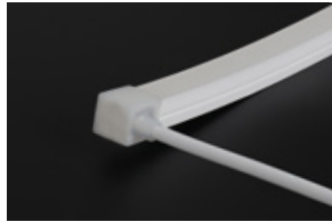


closed

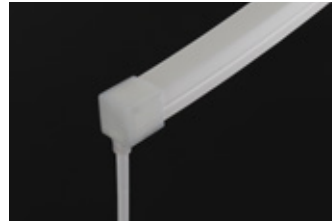
### Silicone glue endcap



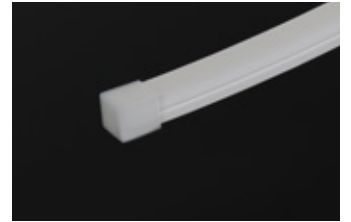
front cable entry



side cable entry



bottom entry

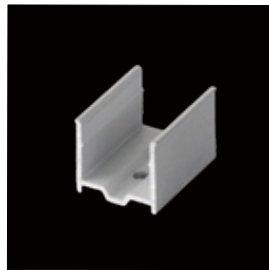


closed

## N1615D-Side-Accessories



LED profile:  
1m/pc



Mounting clip  
(Optional)



Curved profile  
1m/pc



Glue



Closed silicone  
endcap



Silicone endcap  
-bottom



Silicone endcap  
-side



Silicone endcap  
-front

# Cable

Cable Type	Schematic Diagram	Specification	Core	Electrical Properties
PVC Cable		0D: 4.0mm /Inner core: 20AW/G	●●	Red V+,Black V-
		0D: 4.5mm /Inner core: 20AW/G	●●○	Black V+,White W,Yellow WW
		0D: 4.5mm /Inner core: 20AW/G	●●●	Red V+,Blue&Black GND,Green DATA
		0D: 4.5mm /Inner core: 20AW/G	●●●	Black V+,Blue B,Green G,Red R
		0D: 6.0mm /Inner core: 20AW/G	●●●●	Black V+,White W,Blue B,Green G,Red R

**Note: For more accessories, please contact our sales.**

# Driver & Cotronller



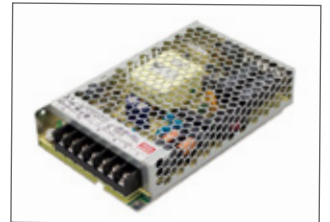
Order code: XLG-150-24-A  
AC100-305V DC24V 150W  
IP67, Global certification.  
Non Dimmable.



Order code: ELG-150-24B  
AC100-305V DC24V 150W  
IP67, Global certification  
3in1 dimming function: 0-10Vdc,  
10V PWM signal and resistance.



Order code: ELG-150-24DA  
AC100-305V DC24V 150W  
IP67, Global certification  
Dali control technology.



Order code: ELG-150-24DA  
AC100-305V DC24V 150W  
IP67, Global certification  
Dali control technology.



SD Card programe controller.  
SMD Capacity supports



For RGB IC- SP105E Magic  
controller \*For more info please



RGB+W controller: 4 Channel  
DC12V/24V, 6A, RGB+W, RF  
remote with finger touch ring.



RGB Controller: 3 Channel  
DC12V/24V, 6A RGB controller,  
RF remote with finger touch ring. .






Dimmer:1 Channel DC12V/24V,  
6A, Dimmer, RF remote with  
finger touch ring.






CCT Adjustable- 2 Channel  
DC12V/24V,6A, CCT adjustable,  
RF remote with finger touch ring.

## Recommend LED strip parameters



### (1) N1615D-SIDE WHT

SMD2835, 120LED/meter									
Part number	Color	Lumen/M CRI 80	Lumen/M CRI 90	Unit cut	Cut every (LEDS)	LED Qty/M	Voltage	Power/M	Max run length
SUR-2835FW120-24V	WW 	916	824	50mm	6	120	24V	14.4W	5 meters from one end
	NW 	968	871						
	CW 	950	855						




### (2) N1615D-SIDE WHT

SMD2835, 160LED/meter									
Part number	Color	Lumen/M CRI 80	Lumen/M CRI 90	Unit cut	Cut every (LEDS)	LED Qty/M	Voltage	Power/M	Max run length
SUR-2835FW160-24V	3000K 	1317	1185	50mm	8	160	24V	14.4W	5 meters from one end
	4000K 	1367	1230						
	6000K 	1444	1300						





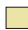

### (3) N1615D-SIDE TW

SMD3527, 120LED/meter, Dual color.									
Part number	Color	Lumen/M CRI 80	Lumen/M CRI 90	Unit cut	Cut every (LEDS)	LED Qty/M	Voltage	Power/M	Max run length
SUR-3527FW120-24V	WW 	643	579	50mm	6	120	24V	7.2W	5 meters from one end
	CW 	389	350					14.4W	
	WW+CW							14.4W	




### (4) N1615D-SIDE RGB

3838RGB LED Strip, 120 LED/Meter									
Part number	Color	Lumen/M	Unit cut	Cut every (LEDS)	LED Qty/M	Voltage	Power/M	Max run length	
SUR-3838RGB-120-24V	Red 	78	50mm	6	120	24V	4.8W	5 meters from one end	
	Green 	230							
	Blue 	49							
	RGB								14.4W




### (5) N1615D-SIDE RGBW

5050RGBW, 96 LED/Meter									
Part number	Color	Lumen/M	Unit cut	Cut every (LEDS)	LED Qty/M	Voltage	Power/M	Max run length	
SUR-5050RGBW-96-24V	Red 	63	62.5mm	6	96	24V	3.75W	5 meters from one end	
	Green 	176							
	Blue 	34							
	WW 	178							
	NW 	187							
	CW 	185							
	RGBW								15W

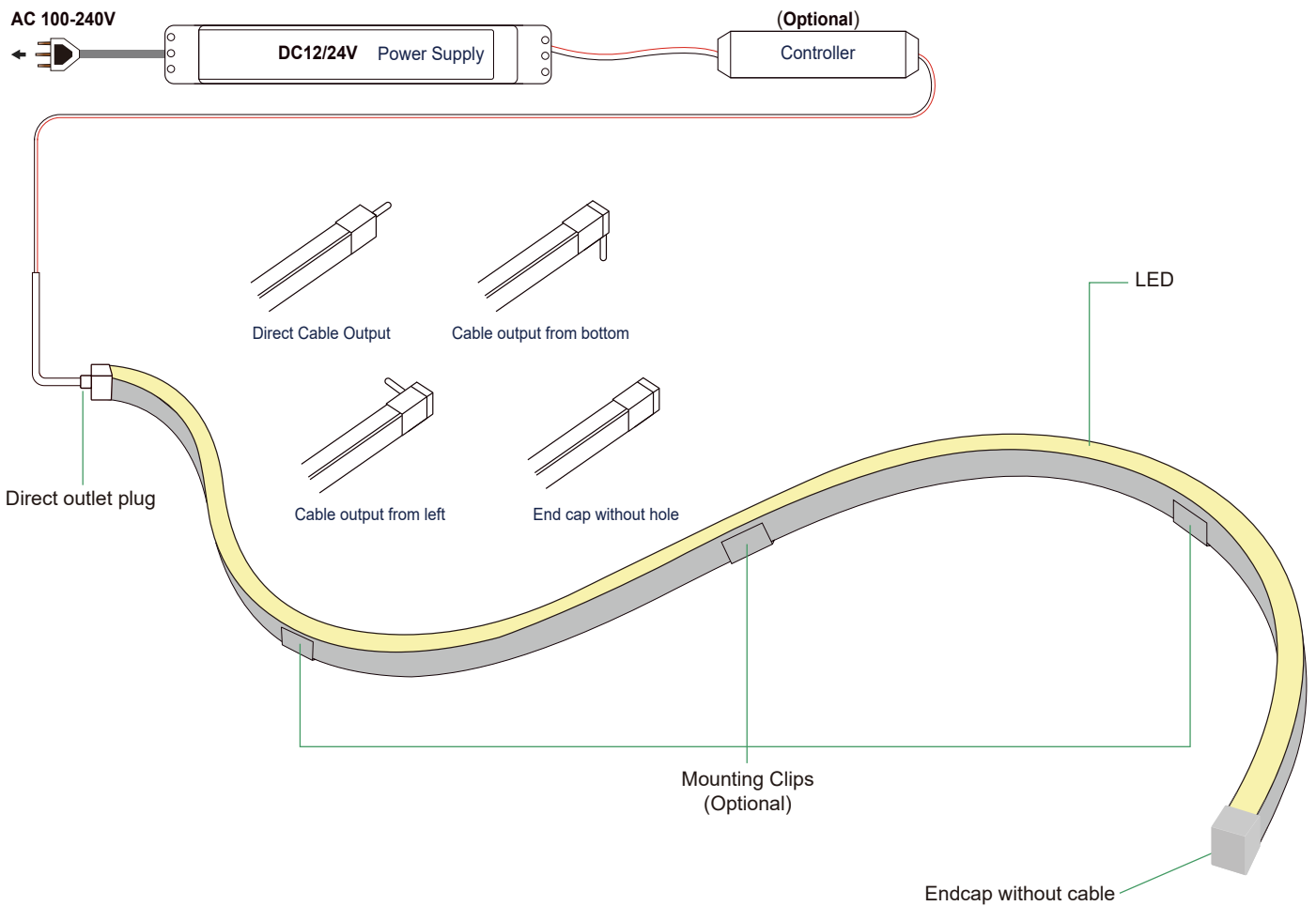
(6) N1615D-SIDE SPIRGB

5050RGBIC, 84 LED/Meter								
Part number	Color	Lumen/M	Unit cut	Cut every (LEDS)	LED Qty/M	Voltage	Power/M	Max run length
SUR-5050RGBIC-84-24V	Red 	81	71.43mm	6	84	24V	5W	5 meters from one end
	Green 	240						
	Blue 	51						
	RGB						15W	

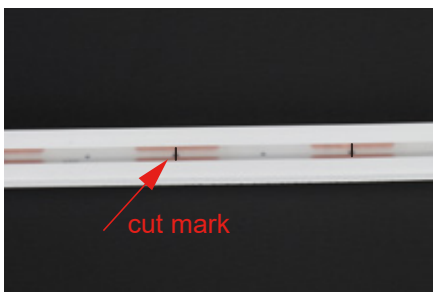
(7) FC-N1615D-SIDE WHT

SMD2835, 180LED/meter									
Part number	Color	Lumen/M CRI 80	Lumen/M CRI 90	Unit cut	Cut every (LEDS)	LED Qty/M	Voltage	Power/M	Max run length
SUR-2835FW180-24V	WW 	976	878	cut anywhere	1	180	24V	14.4W	5 meters from one end
	NW 	1028	925						
	CW 	1011	910						

# Product system solutions



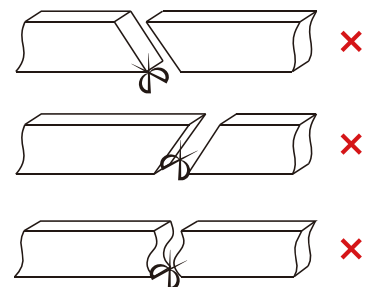
## Cut mark



Remarks: There is a transparent window at the bottom of the light strip,



Make precise vertical cuts at the exact cut position of the light strip.

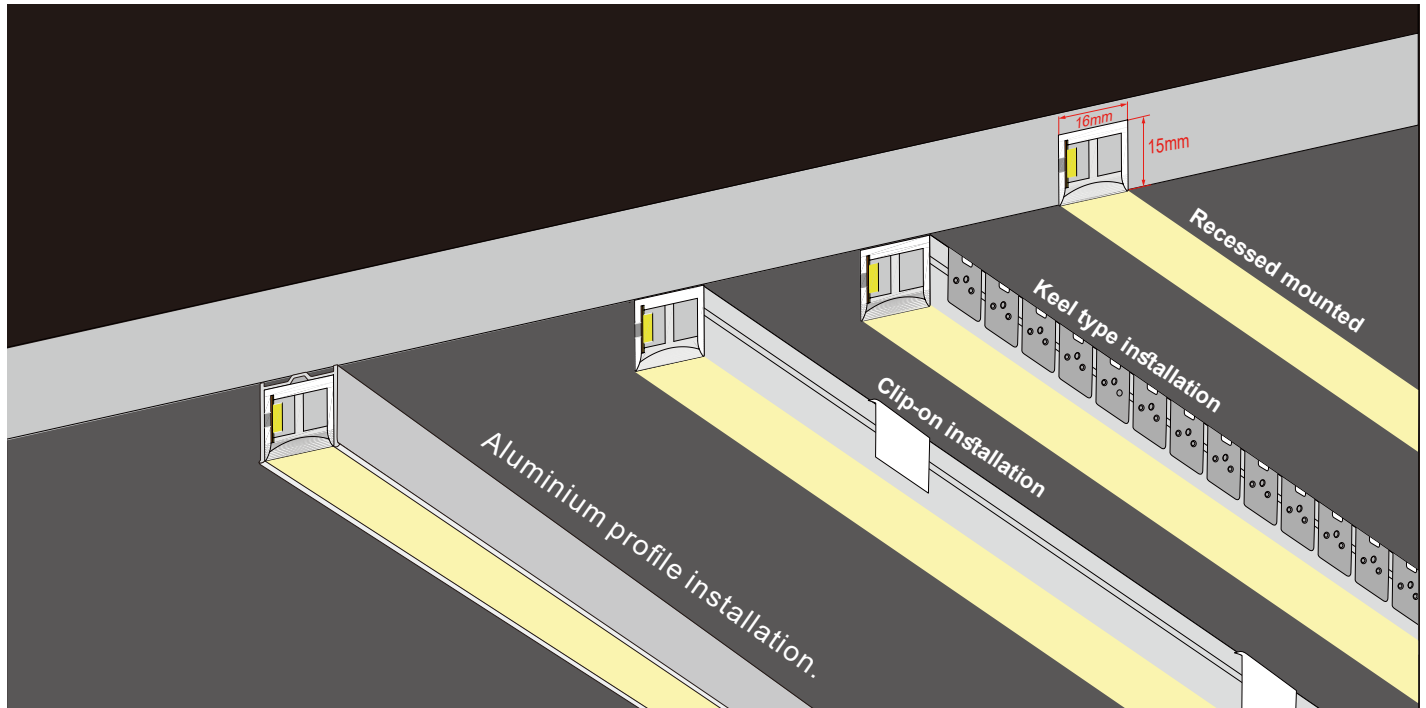


Please do not arbitrarily cut or cut into a bevel and arc section.



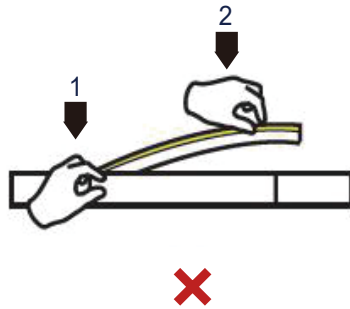
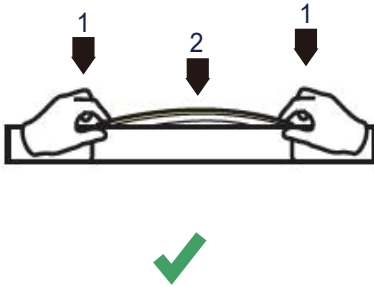
# Installation

This product is suitable for surface mounting or embedded sealing installation. Recommended slot size: Width 16mm, Depth 15mm, gently press the neon sleeve into the slot.

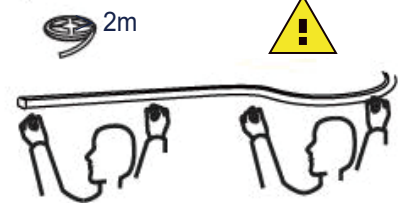


## Installation of carrier

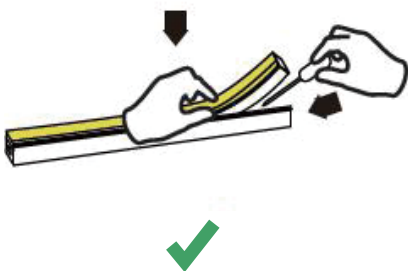
1. When installing the LED strip, install it from both ends at the same time, installation from one direction is prohibited.



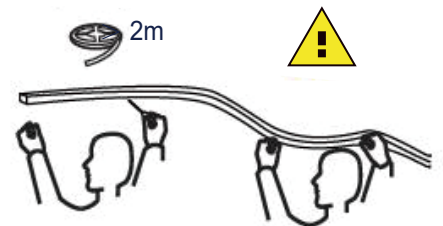
⚠ If the length of LED strip is over 2m, it is recommended to install by two persons.



2. Use tool to disassemble carefully, and do not pull the LED strip directly.



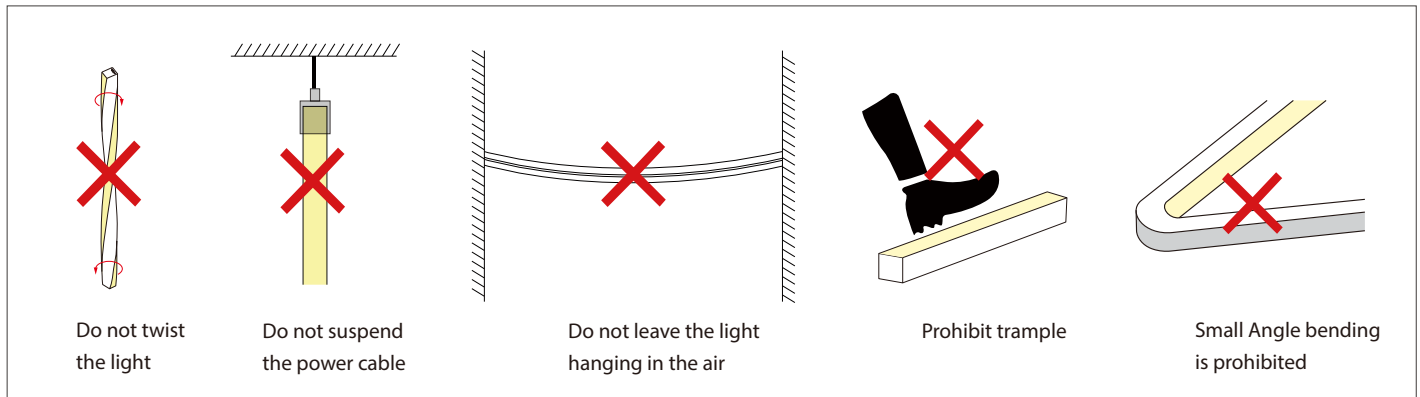
⚠ If the length of LED strip is over 2m, it is recommended to disassemble by two persons.



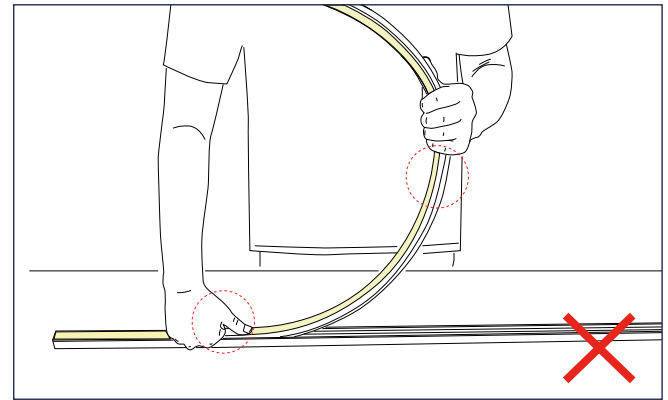
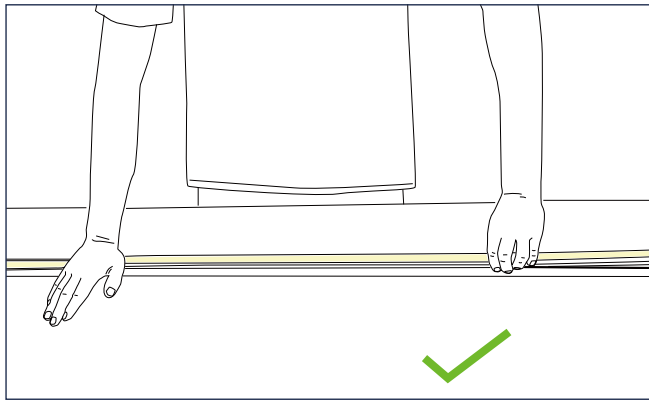
## Cautions

- Please notice that the strips are not bendable to all directions. As the appropriate specific shape and degree, please follow the following instruction.
- LED strips are low voltage products, you must use the power supply (transformer). Please don't connect the led strip directly to the AC 110V or AC 220V. Otherwise, it will burn out the LED strips and lead to safety (security) accidents.
- Please read the specifications thoroughly before installation by professional staff to make sure the safe use.

## Wrong bending way



## Correct bending way

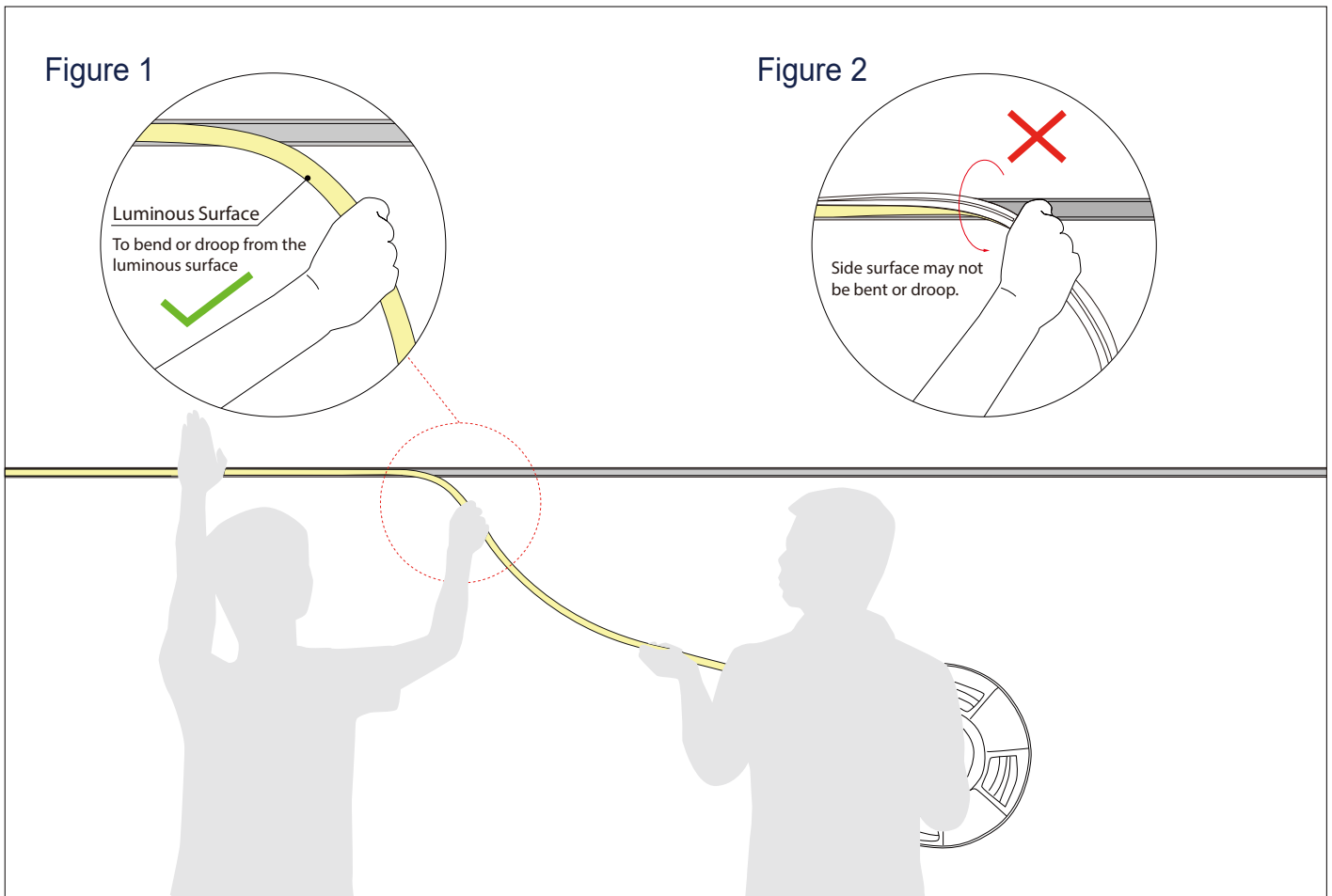


- Please press the led strip with your palm to slowly insert the led strip into the groove, and gently straighten the led strip above the groove with your right hand.
- Try to keep the led strip in a flat state during the installation process.

- Do not press the led strip with a single finger, it is easy to damage the internal parts of the led strip.
- The bent arc of the led strip should not be too large during installation.

## Installation Precautions -- Side Mounted

( If the length of the light is more than 2 meters, two persons must work together to install it. )



### 1. Installer:

- Press the light with the palm of the left hand to slowly load it into the slot. Straighten the light with right hand so that it droop in the direction of your hand. See Figure 1.
- Side surface may not be bent or droop, See Figure 2.

### 2. Assistant:

- Cooperate with the installer to lift the reel of the light, and then slowly deliver the light to installer. Do not pull or twist the light during the installation.

## Package of neon strip (5M/Roll)

