

Flex Led Neon Light

F-NEON-280



Product Specification



LED strip colloid specifications comparison

Materials	Silicone flexible led strip	PVC flexible led strip	Notes
Main parameters			
Colloid features in -40°C	No crack after 30 days	Totally cracked	The low temperature resistant of silicone is superior than PVC or epoxy materials
Colloid features in 120°C	No obvious change after 72 hours	Colloid changed into yellow and deformed after 2 hours	The high temperature resistant of silicone is superior than PVC or epoxy
Colloid features in 180°C	No obvious change after 72 hours	Colloid changed into brown and some melted after 20 minutes	Over 150°C, PVC is easily hydrolyzed, Viscosity becomes weaken and easily seperated
Steadily lighted in Seawater for 72 hours	No obvious change	Serious atomization on the surface	The waterproof grade of silicone led strip can reach to IP67, high resistance to acidic alkali and salt properties
Thermal conductivity	Good thermal conductivity	No thermal conductivity	Pvc and epoxy cannot conduct heat, while silicone has good thermal conductivity




Product features

- Anti-yellowing and heat resisting silicone glue, chemical resistance acid and alkaline, available for extremely terrible outdoor environment.
- Uniform and soft luminance, no light spot.
- Super brightness large chip, golden wire welded and copper led holder for quicker heat dissipation, higher stability, longer life span.
- Leadless SMT technique (RoHS certificated), smooth welding joint, firm connection of led and pcb.

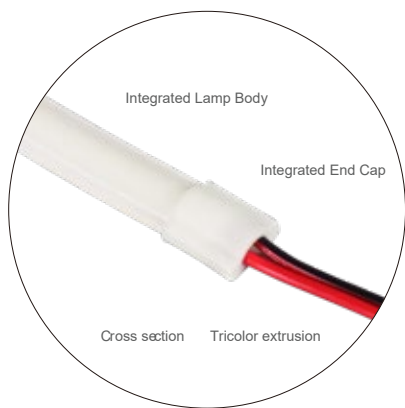


Recommend LED strip parameters

(1) SUR-F-NEON-280-WHT

SMD2835, 280 LED/meter									
Part number	Color	Lumen/M CRI 80	Lumen/M CRI 90	Unit cut	Cut every (LEDS)	LED Qty/M	Voltage	Power/M	Max run length
SUR-2835-280-24V	WW 	810	729	25mm	7	280	24V	9.6W	5 meters from one end
	NW 	850	765						
	CW 	840	756						

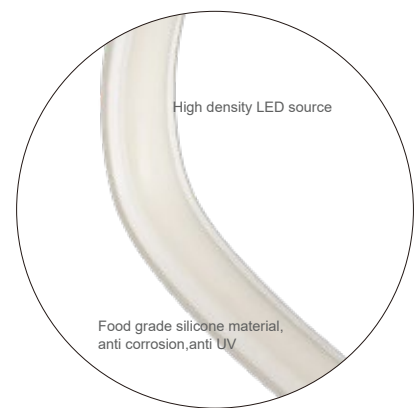
Dimension structure



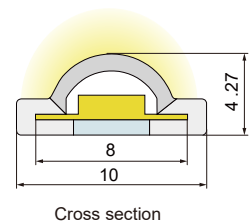
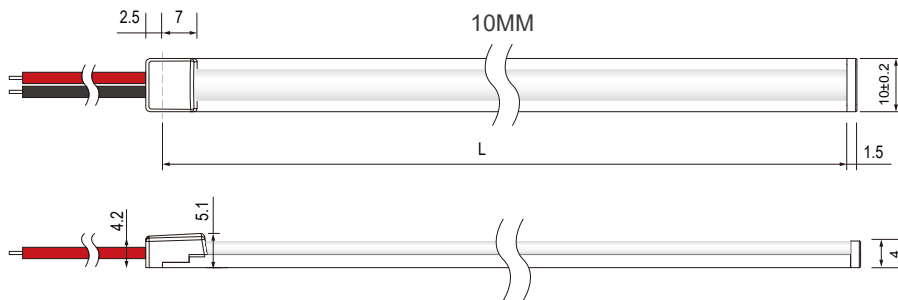
More extreme vision



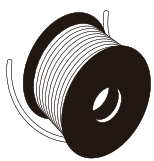
More perfect touch



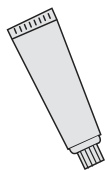
More stable performance



Installation accessories



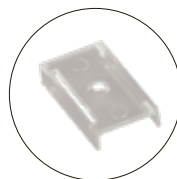
Cables and Connectors



Glue



Screws



Fixed clips



Front cable entry

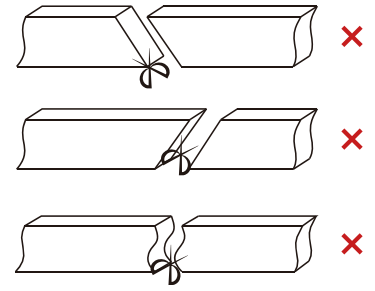
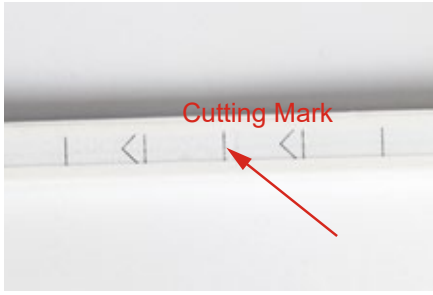


Bottom entry



End Cap

Cut mark

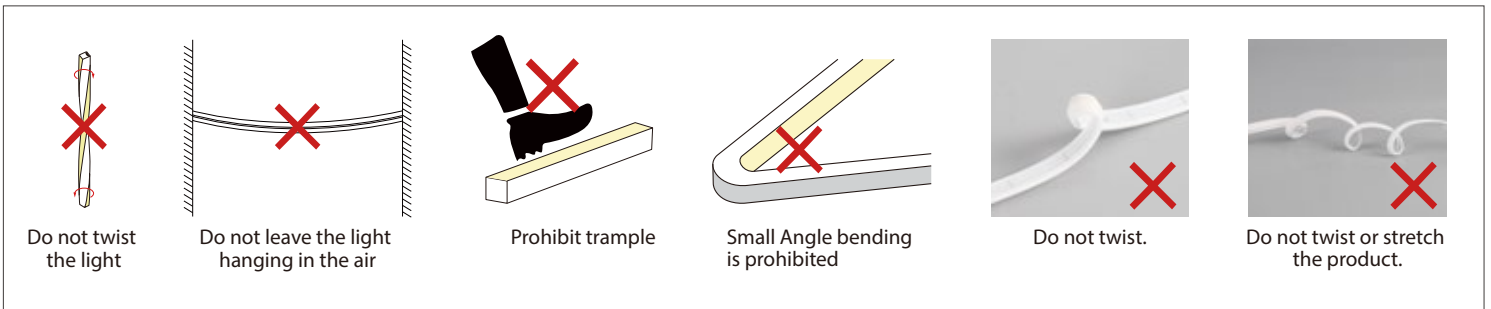


Remarks: There is a transparent window at the bottom of the light strip,

Make precise vertical cuts at the exact cut position of the light strip.

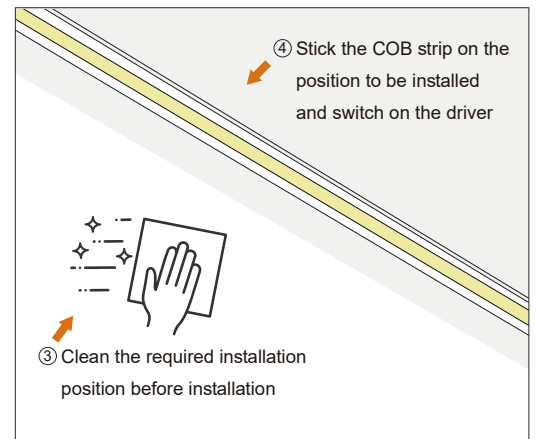
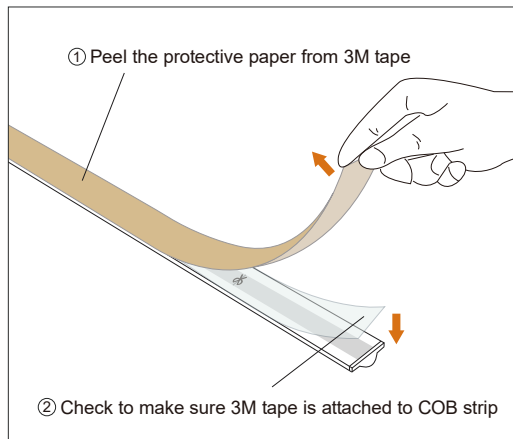
Please do not arbitrarily cut or cut into a bevel and arc section.

Cautions



Installation Diagram

Installation with 3M tape



buckle installation

