

Neon starline ND14D

Features:

install

- Newly upgraded third-generation product, easy to install and beautiful in appearance.
- 360° uniform light emission, without shadows.
- Can perfectly prevent the internal light strip from being damaged during installation.
- When in use, the product can be well suspended and straightened into a straight line.
- 360° plane rotating structure base + side 90° rotating structure, no need to consider the installation angle when installing.



Accessories:



Ball head rod



Base



neon strip 5-10 Meters/roll

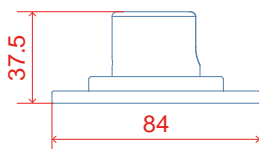


Expansion plug/screw

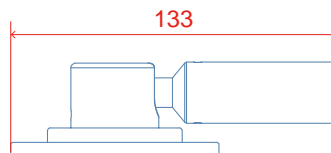


Tool

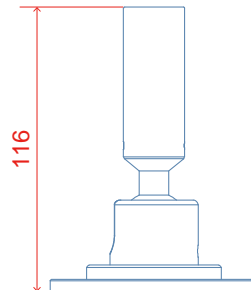
Size:



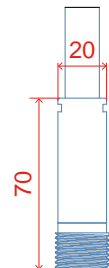
Base size



90° straightened size



180° straightened size

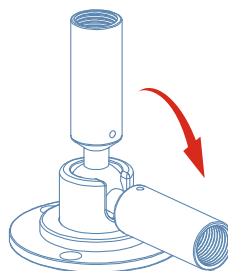


Fixing size

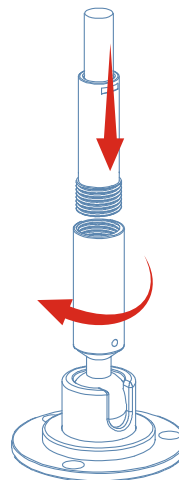
Rotation angle:



Rotation angle: 360°



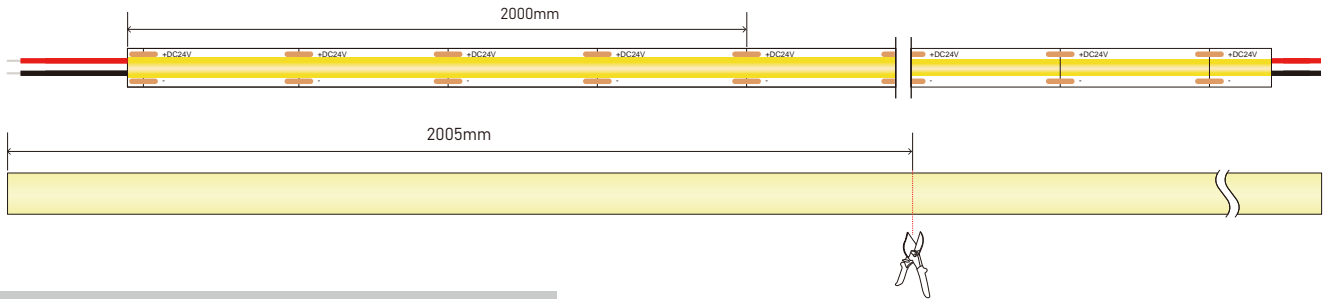
Rotation angle: 90°



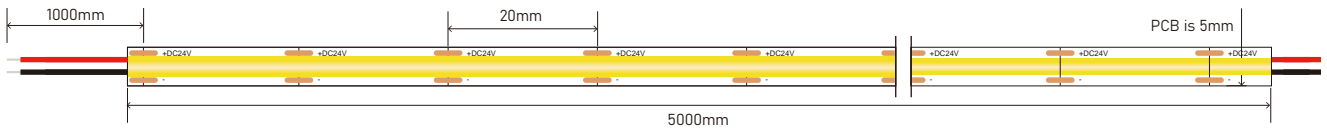
Telescopic length 50mm

Cutting guidance:

Note: The cutting length of the neon tube should be within 5mm longer than the LED Strip.
eg. If the length of LED strip is 2m, the cutting length of the neon tube should be 2m-2.05m.

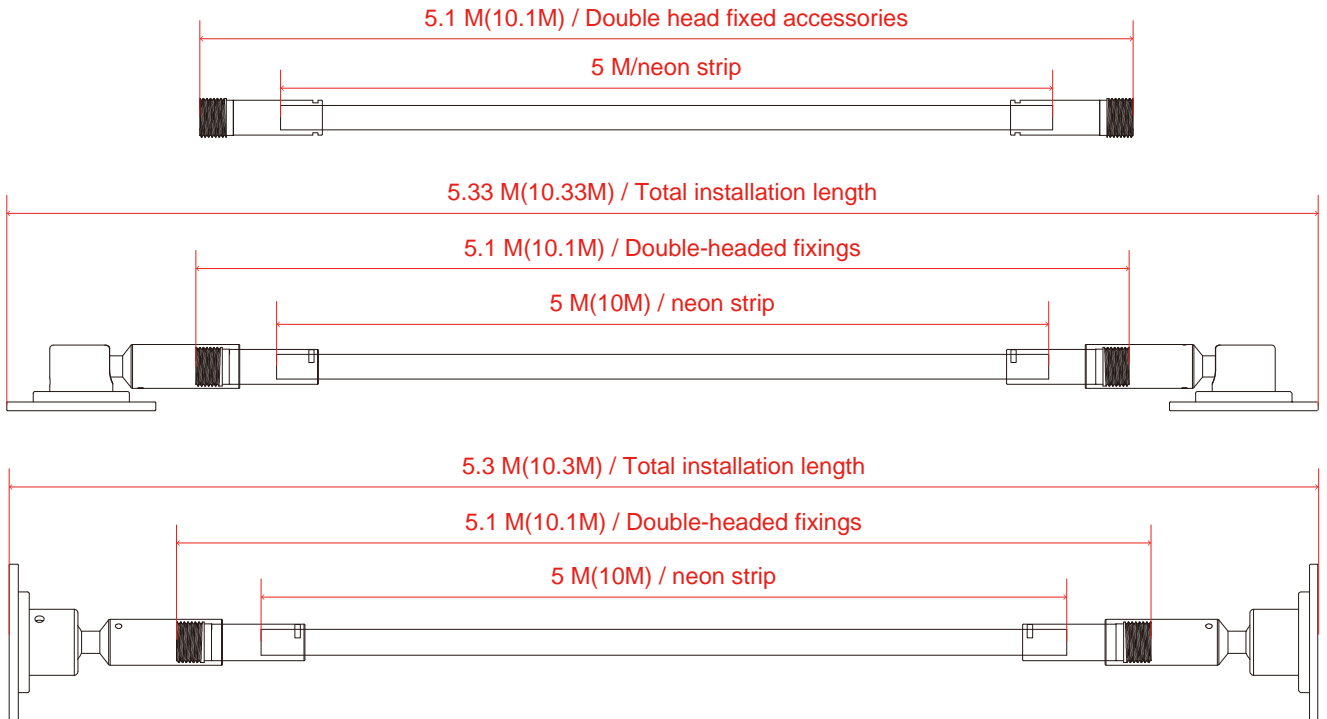


Recommended Led Strip parameters:



* In order to avoid the Voltage drop, we could connect the power supply on both ends of the 12v/24v led strips, or choose the high voltage led strips.

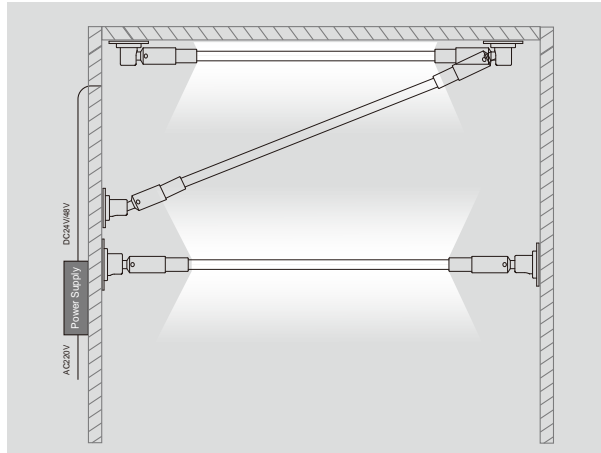
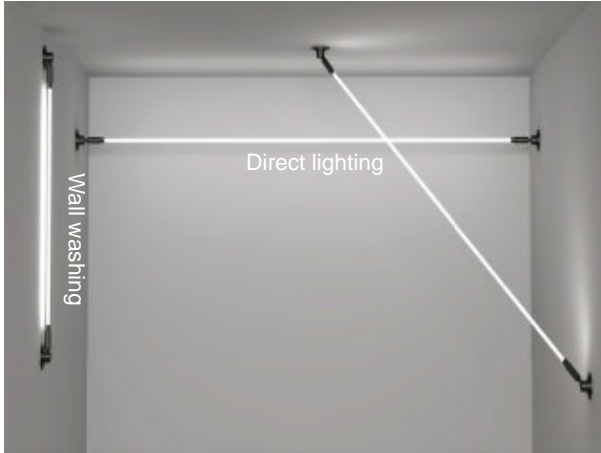
Product installation length parameters:



Recommend Led Strip parameters:

Model No.	Color	Lumen/M	Voltage	Power/M	PCB Width	Packing/M
ND14D	WW	700	24V	13 W	5mm	5 Meters/reel
	NW	740				
	CW	720				

Scenes To be Used:



Package:



Weight for 5 meters is 1.5KG per box.
Weight for 10 meters is 2.1KG per box.



Inner box size 38.5*38.5*7.5CM



Outer box size 41.5*41.5*31.5CM
(4 boxes in one outer carton)

Connection Diagram:



Step 1
products include ball head rods/
bases, expansion plugs/screws,
and tools



Step 2
Mark the hole location.



Step 3
Use the drill with a head of
7mm-7.5mm diameter , make
a hole of 40mm depth.



Step 4
Drive the expansion plug into
the drilled hole.



Step 5
Assemble the base with screws.



Step 6
The wire is inserted into the hole
according to the outlet method.



Step 7
Rotate the base to lock the
toothed part of the neon tube.



Step 8
Rotate the other end of the base to
lock the toothed part of the
neon tube



Step 9
Straighten the neon tube together
to mark the installation drilling
location



Step 10
Use the drill with a head of
7mm-7.5mm diameter , make
a hole of 40mm depth.



Step 11
Drive the expansion plug into
the drilled hole.



Step 12
Assemble the base with screws.



Step 13
Use a wrench to hold the groove
on the head, insert the inner
hexagon tool into the round hole
on the base, turn it and straighten
the neon tube.



Step 14
Use a wrench to hold the groove
on the head, insert the inner
hexagon tool into the round hole
on the base, turn it and straighten
the neon tube.



Step 15
installation is complete