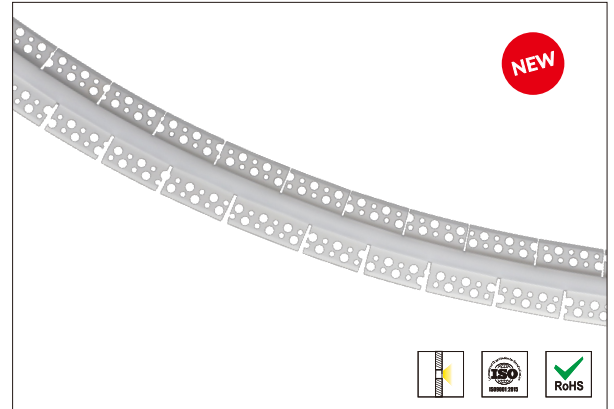


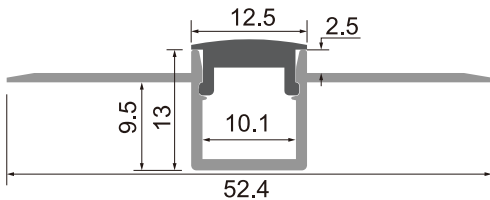
BENDABLE RECESSED ALUMINIUM PROFILE W5213

Features

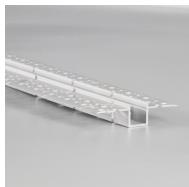
- Internal Width: 10.1 mm
- Material: Anodized Aluminum Extrusion
- Length: 1~3 meter
- Dimension: 52.4×13 mm
- Application: Gypsum/Plaster Recessed Lighting
- Customized color can be ordered
- Minimum bending radius of aluminum profile center: R570mm



PRODUCT SIZE



Standard Accessories



LED Aluminum profile.
1~3 Meter



Silicone cover
1: Silicone cover

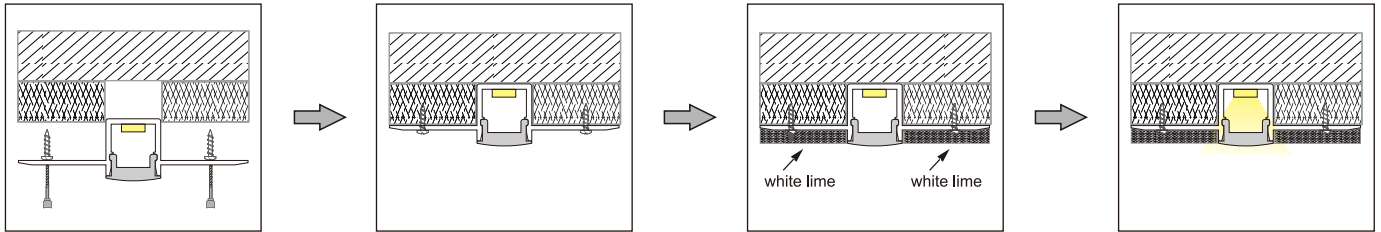


End_Cap×2
1 With hold
1 Without hold

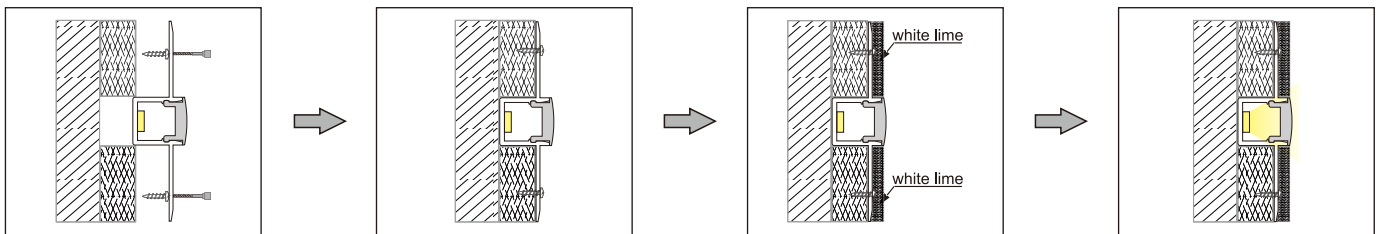
Installation And Service Environment

1: Down lighting

With the screw



2: Wall side lighting



Step 1

Leave a 12.5(W) *9.5(H) mm groove when brush the cement paste.

Step 2

Inset the W5213 in the groove and fixed the W5213 led profile wing on the dry cement surface.

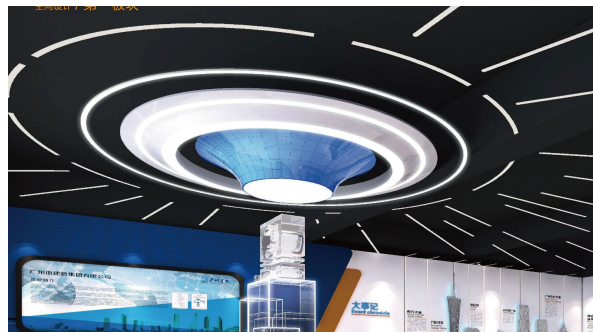
Step 3

Paint the W5213 wing with white lime.

Step 4

Turn on the light.

PROJECT



REV:A0

Lister:

Assessor:

Approver:

< 2/2 >
REV:A0