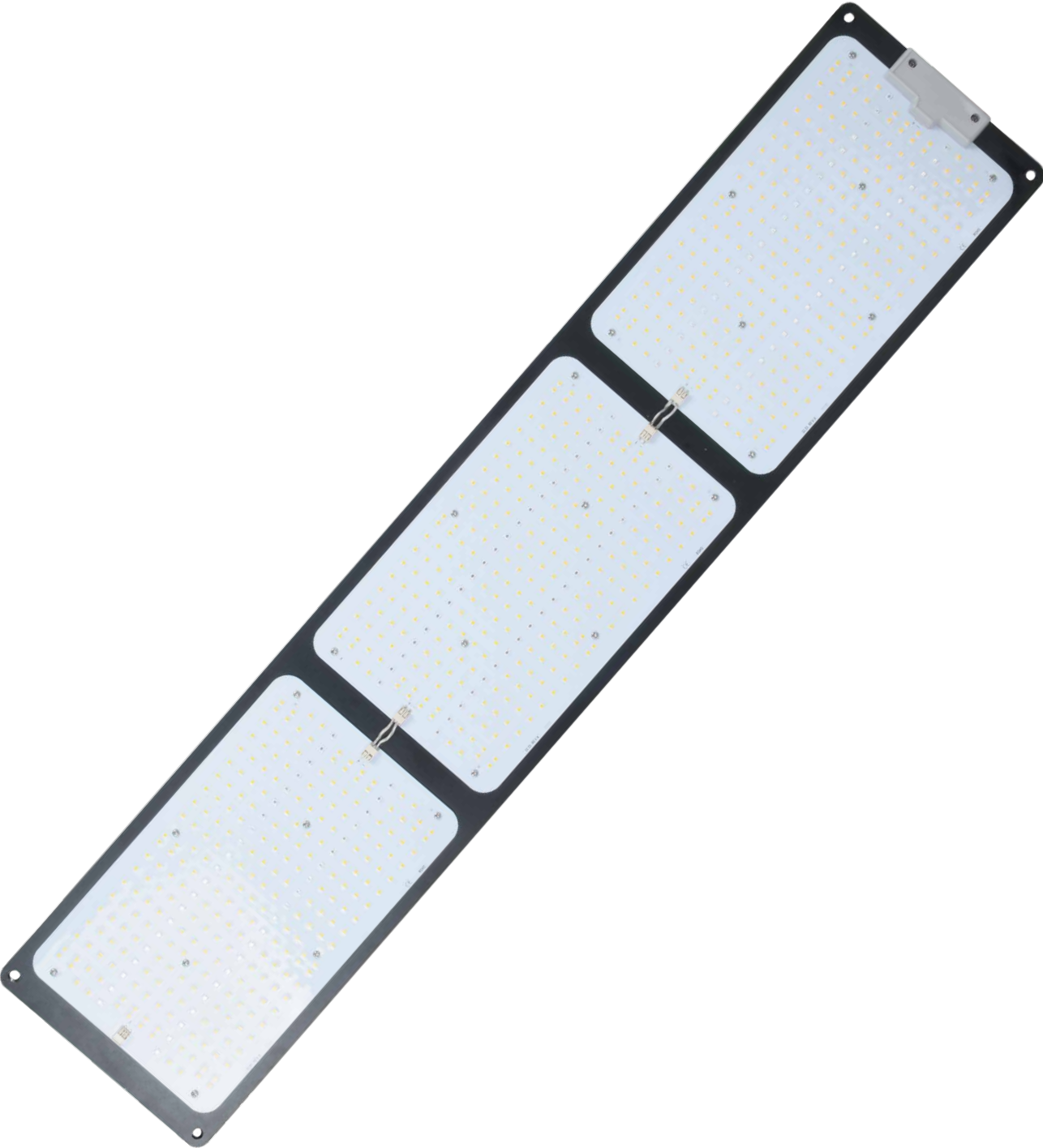


Quantum Board Led Grow Light

SUR-GL320



Product Feature

- Shorten growth cycles
- Improve the color, shape and taste of plants
- Plant growth is not affected by the weather
- The lighting spectrum can be customized
- Increase yield and crop quality with low maintenance costs
- Easy to install and connect



Usage Scenarios

Combined with our professional customized lighting spectrum, LED quantum board grow Light provides every greenhouse grower new opportunities to improve quality and yield.

LED quantum board grow light can provide light efficacy of 2.75umol/J. It provides growers with unique advantages for specific crops that require high luminous flux, which can directly replace traditional plant lighting systems or as a supplement to save energy.

LED quantum board grow light can be used in grow tent, grow room, grow chamber, greenhouse, vertical farming, hydroponics, aquaponics, indoor gardening and more places for different indoor plants.

IP65 waterproof rating makes this grow light suitable for more planting environment, especially hydroponic cultivation, greenhouse cultivation, commercial cultivation projects, etc.

Product Content



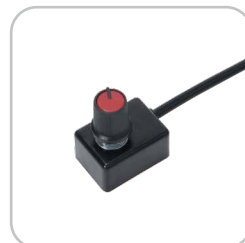
Product body



Fixed wire



Power cable



Adjusting knob



Adjusting pulley

Product Series



SUR-GL120

Power: 120±5%W
 PPE: 2.75umol/j
 PPF: 336±5%umol/S
 Size: 326*195*66mm
 Weight: 2.53KG



SUR-GL240

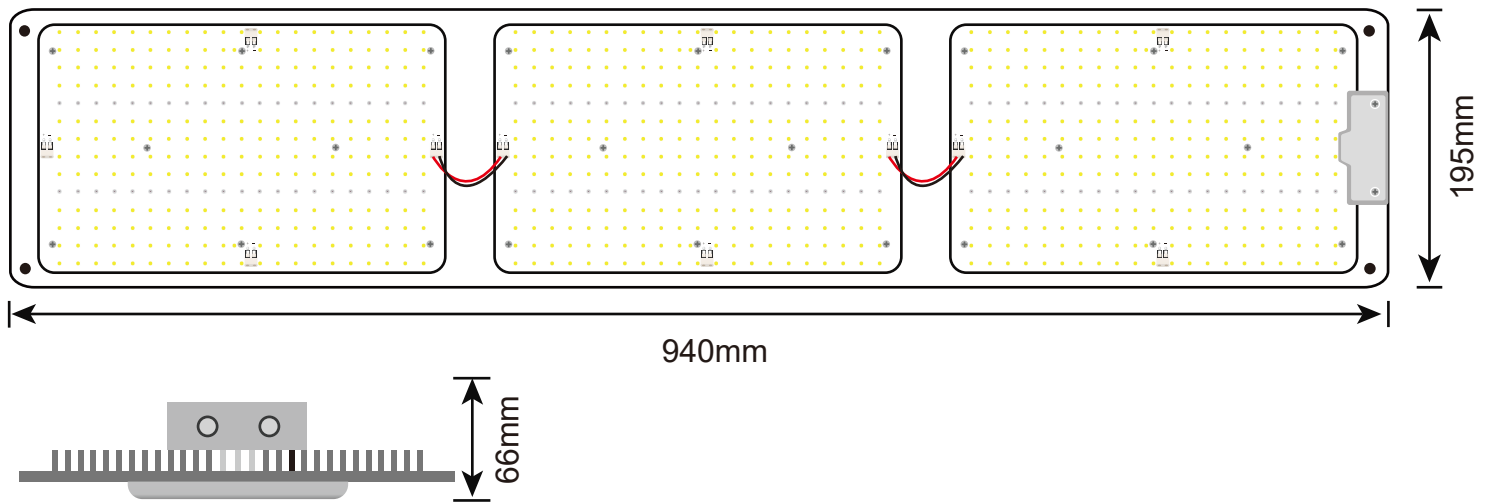
Power: 240±5%W
 PPE: 2.75umol/j
 PPF: 671±5%umol/S
 Size: 632*195*66mm
 Weight: 3.95KG



SUR-GL320

Power: 320±5%W
 PPE: 2.75umol/j
 PPF: 893±5%umol/S
 Size: 940*195*66mm
 Weight: 5.96KG

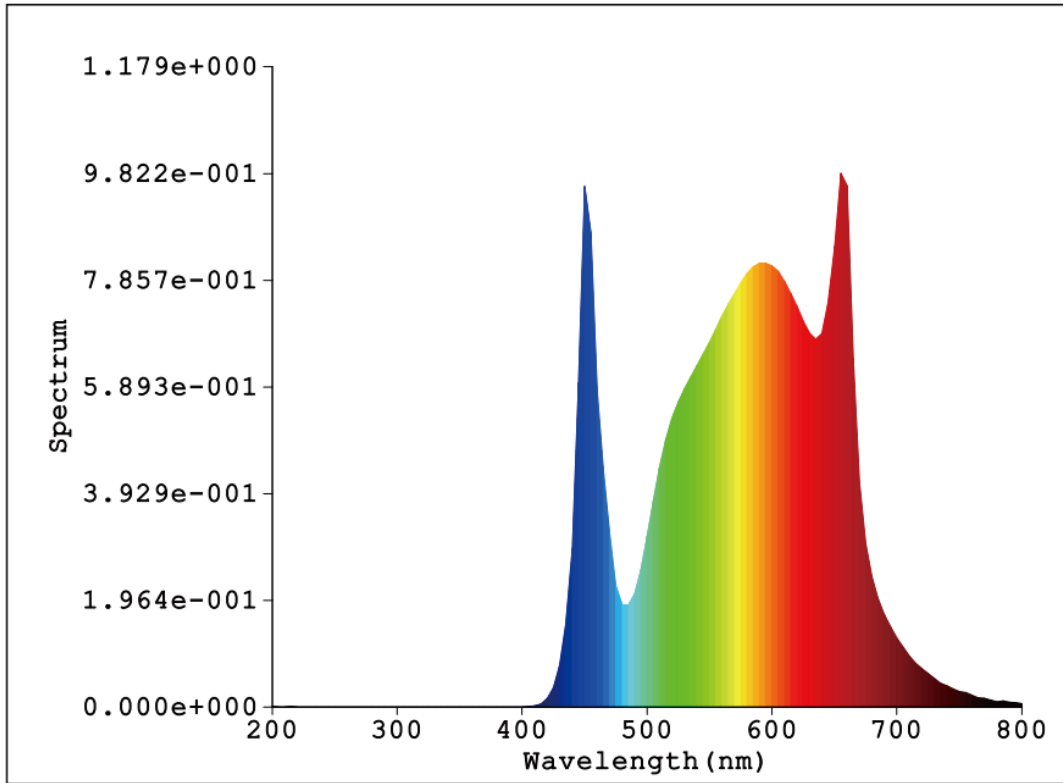
Size



Specification

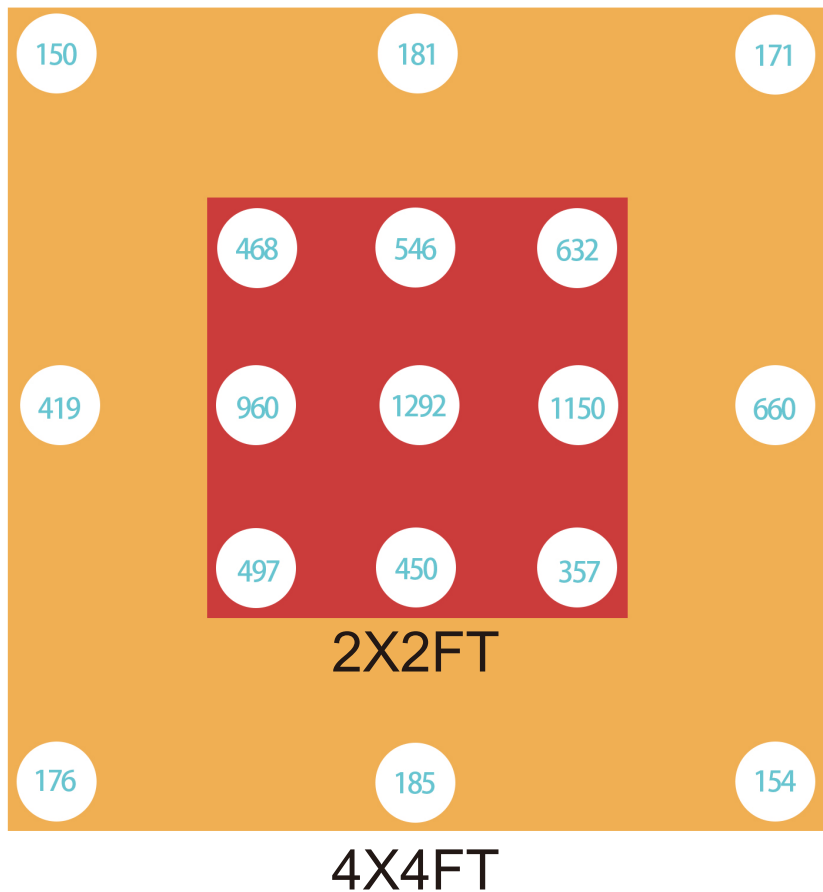
Module	SUR-GL320
Power	320W±5%W
Spectrum	Full Spectrum
Light Source	Samsung LM301B
PPF	893%±5%umol/S
PPE	2.75umol/j
Input voltage	100~277V AC
Weight	5.96KG
Size	940*195*66mm
Light Angle	120°
LED Quantity	4000K:756pcs 660nm:126pcs
PPFD(30cm)	1292 umol/(m ² ·s)
IP	IP65
Power factor	0.987
Lifespan	>54000HRS
Warranty	LED Warranty(3 Years) LED Driver Warranty(5 Years)
Mounting Height	≥ 6" (15.2cm) Above Canopy
Certification	CE、RoHS,UL certification of power supply
Cooling	Passive

Test chart

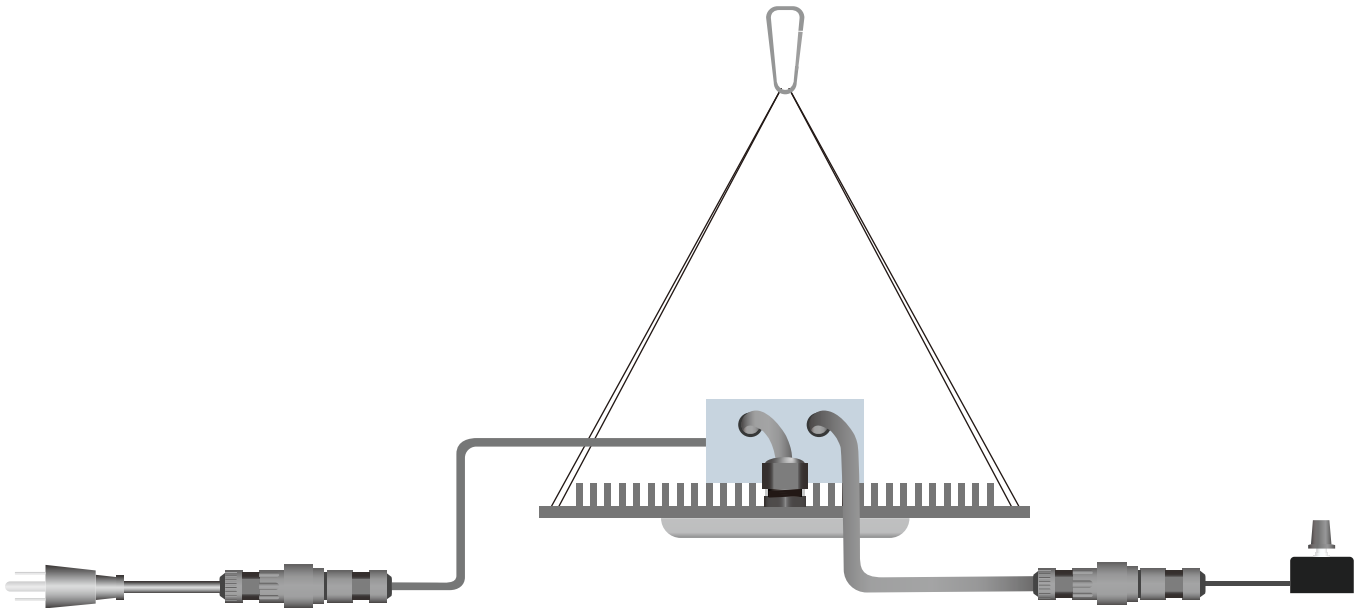


320watt PPFD

SUR-GL320-30cm



Connection Diagram



Packing Information

Module	Qty/CTN	CTN Size-CM	GW
SUR-GL120	1pcs	38.5cm*23.5cm*10.0cm	2.93kg
SUR-GL240	1pcs	69.0cm*23.5cm*10.0cm	4.55kg
SUR-GL320	1pcs	99.5cm*25.5cm*23.5cm	7.00kg



External Box
L*W*H=90.5*25.5*23.5cm







This sign means that the aluminium board can reach very high temperatures (>65°Celsius/>149°Fahrenheit).
Observe a cool down period before performing maintenance.

1. Don't touch the LED when the light is on, To avoid scalding.
2. The ambient temperature shall not exceed 35°C.
3. Pay attention to prevent short circuit and overload.
4. Do not place heat insulation articles on light.
5. Please pay attention to ventilation and heat dissipation when use it in indoor environment.

IP65
Damp & wet locations
Input Voltage
100~305V AC



min
-20°C




max
40°C

RoHS CE



WARNING

Turn off and disconnect power before installation. Must be installed by a qualified electrician in accordance with all national and local electrical and construction codes and regulations.



WARNING

DO NOT connect to live power until installation is complete

DO NOT attempt to install or use until you read and understand the installation instruction and safety labels

DO NOT modify or alter the product; doing so will void the warranty