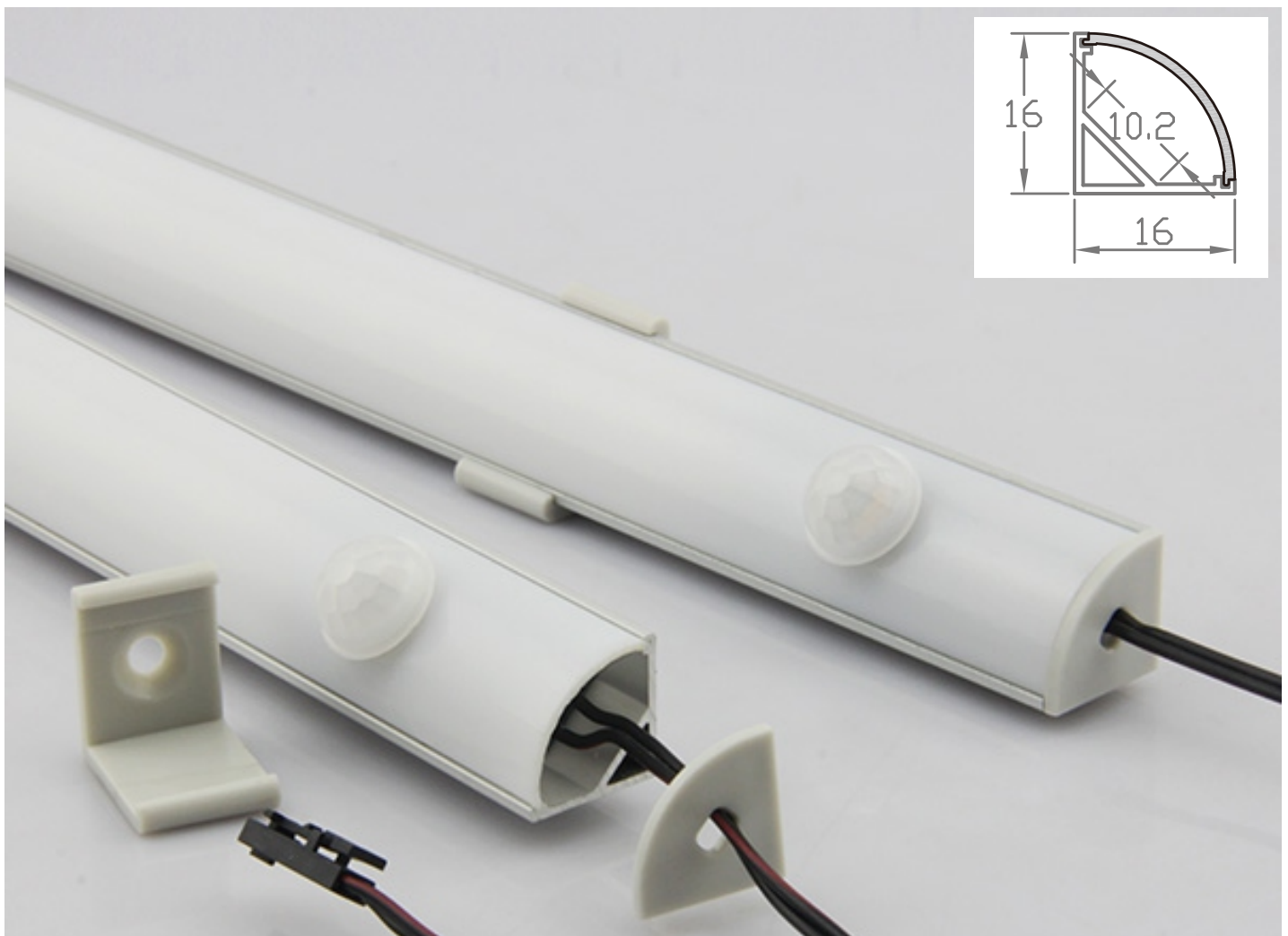


## LED light A1616 with 2835 LED Strip and PIR sensor switch

The A1616 LED cabinet light is easy to be installed at the corner inside of the cabinet. Substantial aluminum mass provides good heat sink for high power LEDs. This model is good for cabinet lighting. the model equipped with PIR sensor will automatically turn on the light when the cabinet door is open.

LED Light A1616			With 2835 LED STRIP and PIR sensor				
Model	Power	Lumens/M	Ra	CCT(K)	Length	Voltage	LED Type
A1616-600	7.9W	825 lm	>90	WW/NW/CW	600MM	DC12V/24V	SMD2835
A1616-900	12.3W	1275 lm			900MM		
A1616-1200	16.6W	1725 lm			1200MM		



Lister: Lxlan

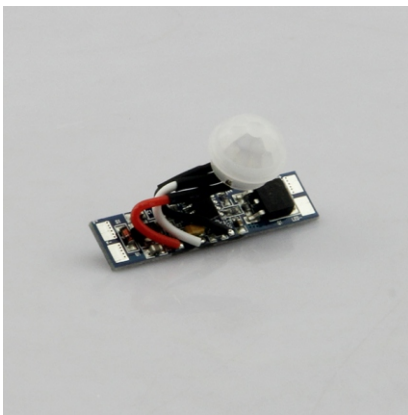
Assessor: 

Approver: \_\_\_\_\_



### **LED Aluminum Profile A1616**

- > Match Flexible LED Strips: Up to 10mm wide.
- > Material: Anodized Aluminum Extrusion.
- > Cover: Transparent, Milky, Frosted PC Cover.
- > Length: 1 to 3 meter long.
- > Mounting: Surface.



### **PIR SENSOR SWITCH: PIR001**

- > Dimension: 10\*43mm
- > Input voltage: 12-24VDC
- > Loading power: 2.5A max.
- > Standby Time: About 40s.
- > Detection Range:  $\leq$  2m.
- > Automatically ON/OFF.



### **2835 Single color 120LED/METER**

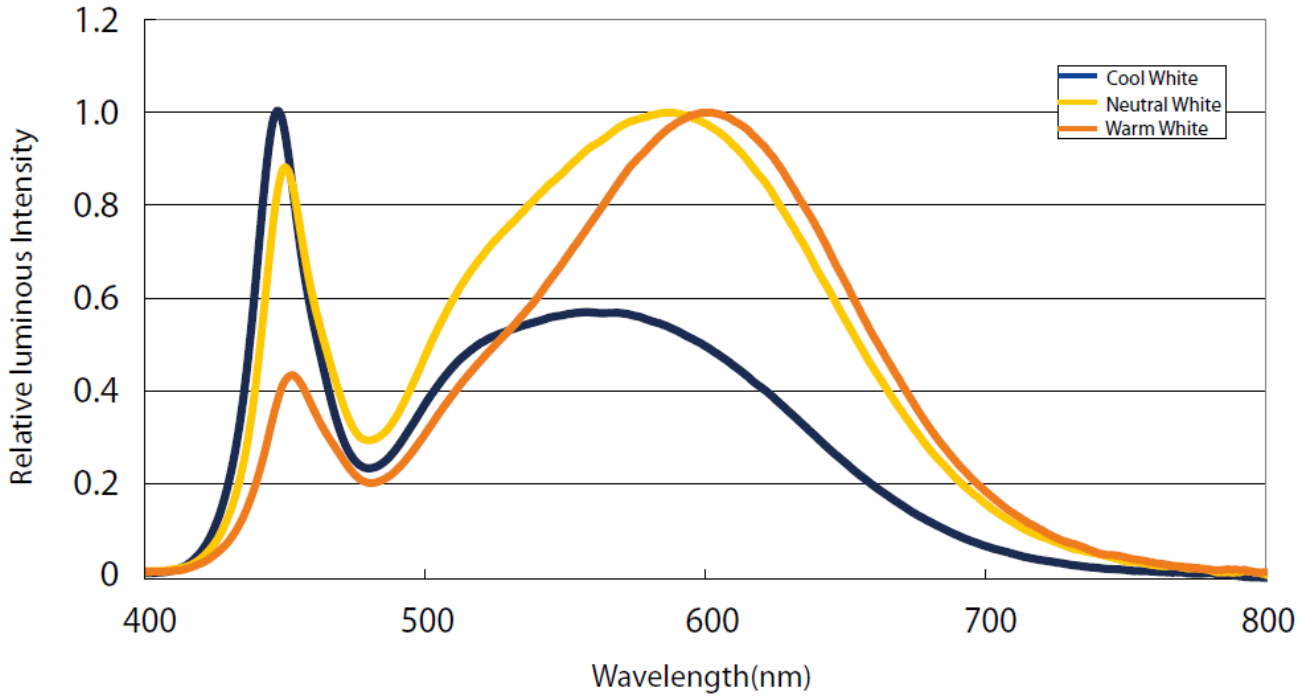
- > Input voltage: 24VDC.
- > Power: 14.4W/M.
- > CCT: 3000K/4000K/6000K
- > CRI >80
- > Lumens: 1300lm/M | 1450lm/M | 1600lm/M
- > Waterproof: IP20



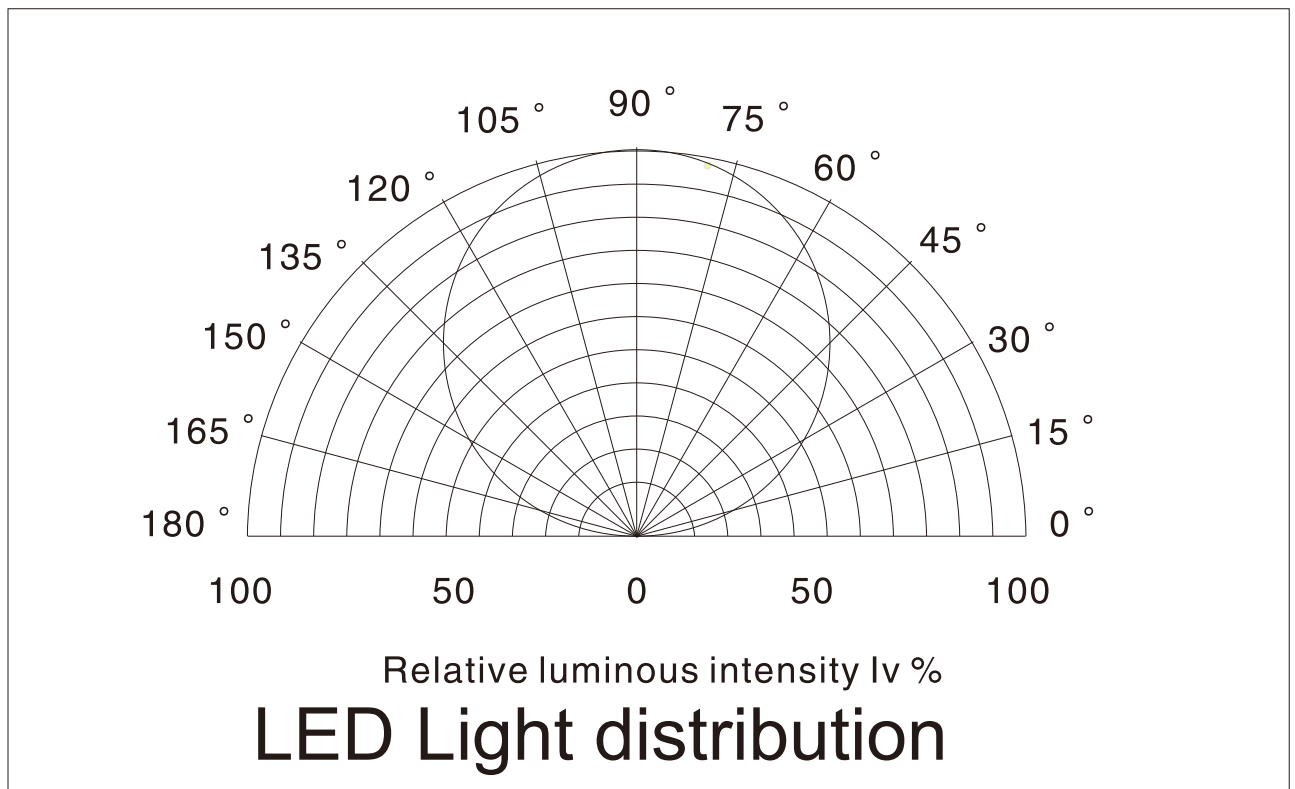
### **Power Supply**

- > Watts: 75W
- > MW Dimmable
- > Output Voltage: 24VDC
- > Input Voltage: 220V
- > Waterproof: IP20

**Color Spectrum (CRI80)**

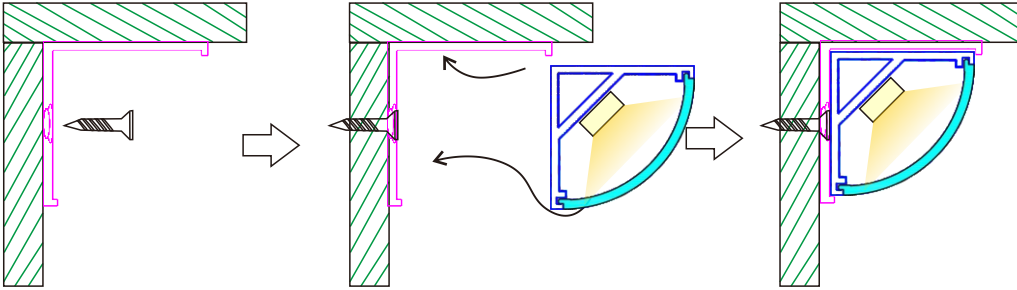


**Radiation diagram**



## Service Environment and Installation:

1, With clip



Step I: Cut a 4mm hole at the back of the cabinet.



Step II: Screw the mounting clips at the corner.



Step III: Put the RU plug into splitter box.



Step IV: Turn on the power.

