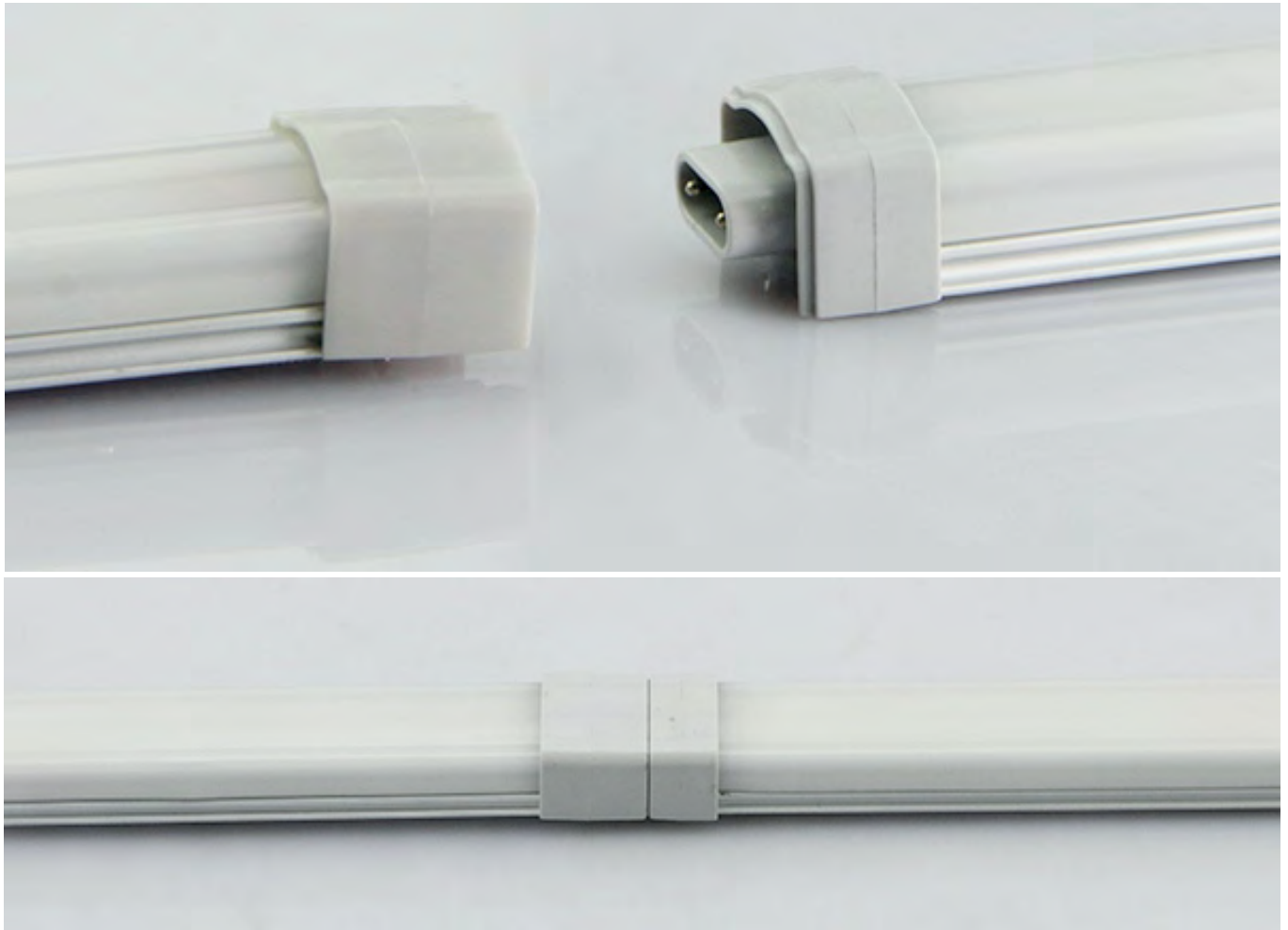


The LED Light Bar can be connected to another light bar directly by male and female connector on the both ends of the bar.
Or by interconnect cables,



Accessories:



Special angular mounting bracket with strong magnet can be clip onto the back of light bar. So the LED Light Bar is adjustable. The mounting bracket can be fixed by screws or either by magnet. Total 4 mounting brackets: 0°, 30°, 45°, 60°.



Accessories:



The LED Light Bar can be connected to another LED Light Bar directly by male and female connector on the both ends of the bar. or by interconnect cables.



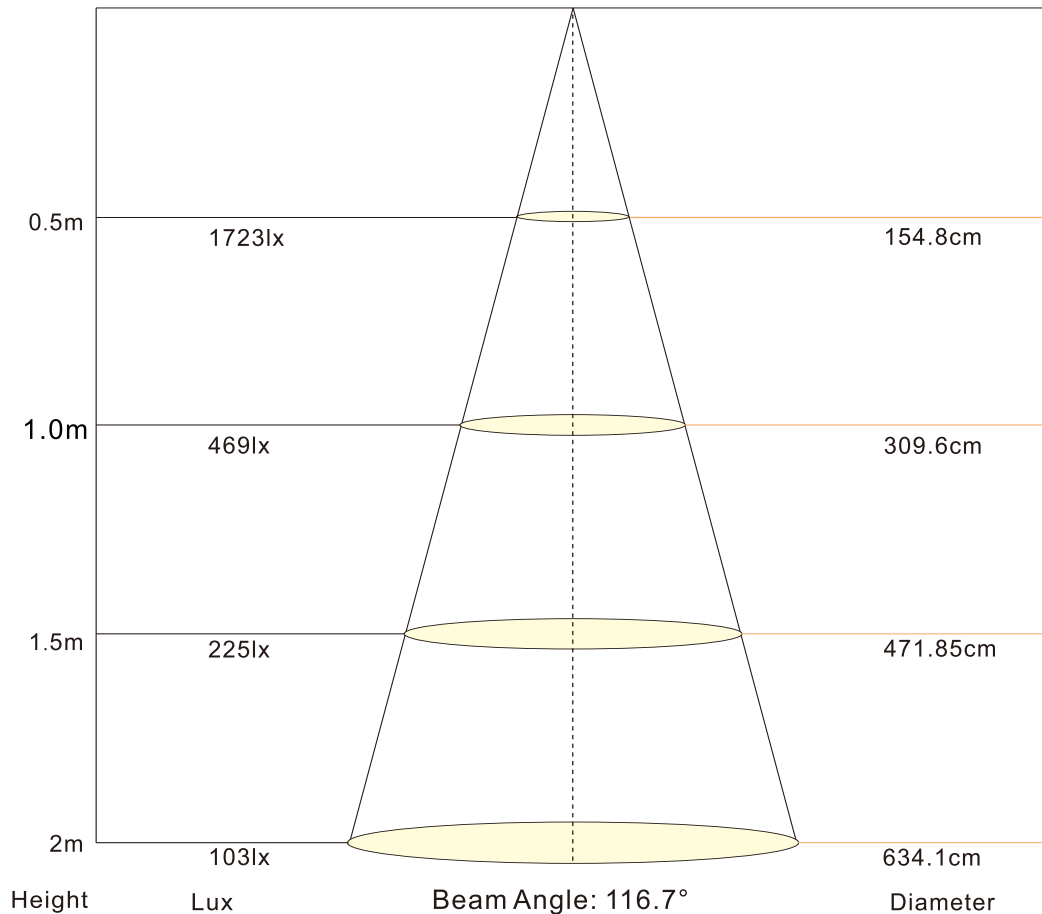
Accessories:



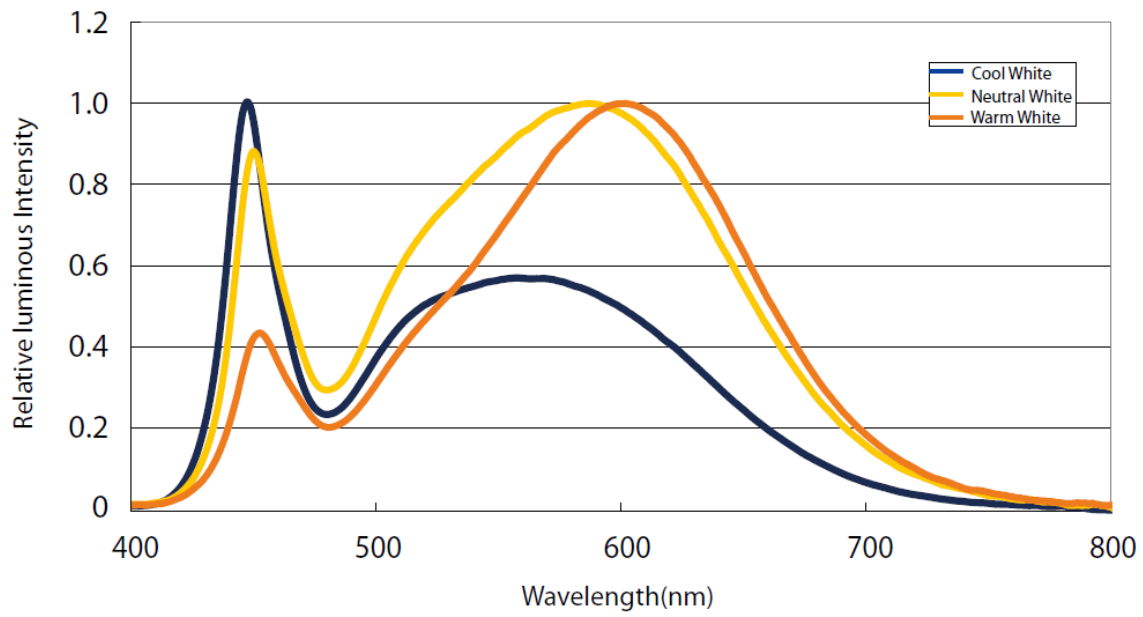
Lighting Parameters of 2835-120LED/Meter-4000K



Lux Diagram



Color Spectrum (CRI80)



Radiation diagram

