

Wireless Kinetic Energy Switch

SGE001-001

Features:

Model	SGE001-001
Work Category	Key Switch
Power Mode	Self Powered (No Battery)
Working Frequency	433MHZ
Operational Life	>200K
Number of Keys	1 Key
Shell Material	Fireproof PC
Transmission	20M(indoor), 80M(outdoor)
Dimensions	L86mm*W86mm*H22.5mm
Work Temperature	-20°C~55°C
Waterproof	IP65



* Images for reference only

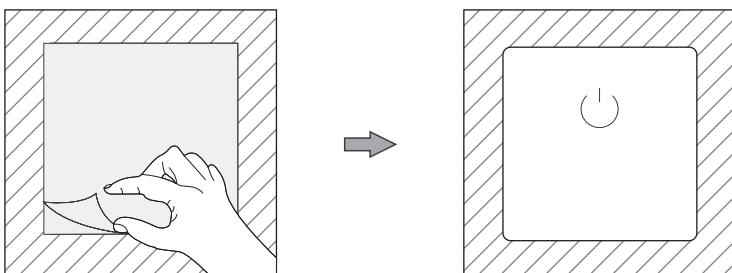


About SGE001-001:

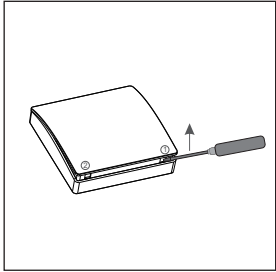
Using simple design style, easy to match in the bedroom. Shell material uses the top class fireproof PC, built-in micro energy collection module, no wiring, no battery and no any power supply. Our products with very high cost performance. Each wireless kinetic switch has a unique identity code that does not generate erroneous control. The emission energy is only one percent of bluetooth with no harmful radiation.

Application: ① ②

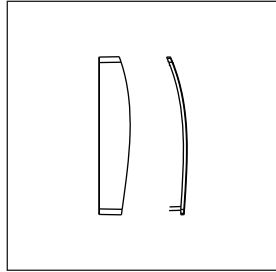
- ① With the double-sided tape (Cannot be mounted on the surface of metal).



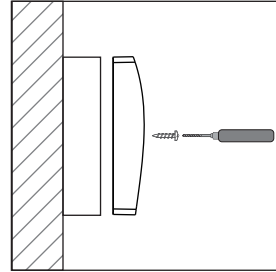
2 Fixed mounting of the base



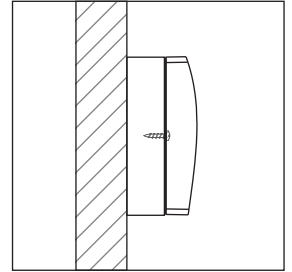
Step 1



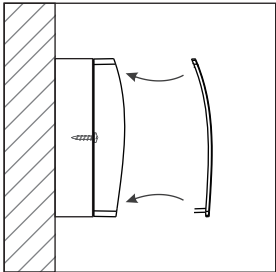
Step 2



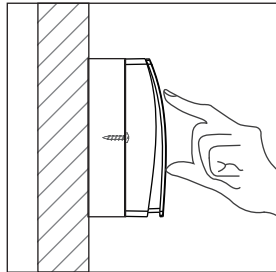
Step 3



Step 4



Step 5



Step 6