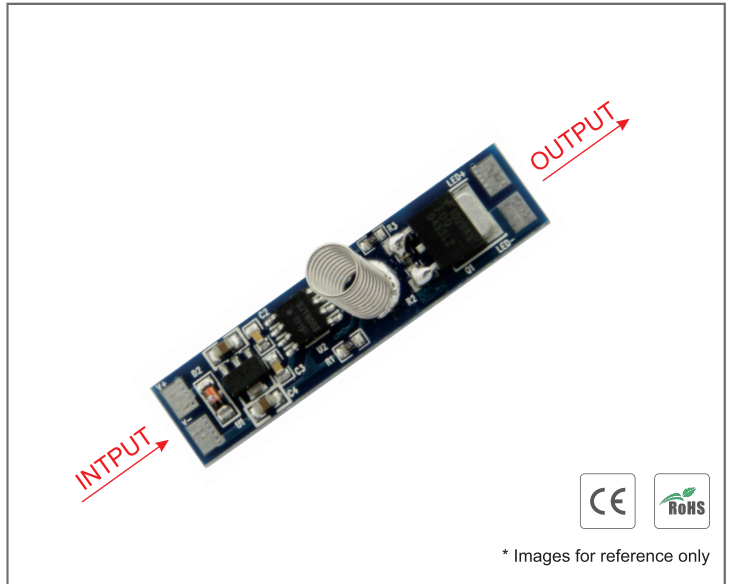


# Touch Dimmer TD001

## Functions:

- Touch switch ON/OFF function.
- Input Voltage: 12V-24V DC.
- Output Voltage: 12V-24V DC.
- Input Current: 8A.
- Height of spring: 20mm.
- Load around 96W for 12V, and 192W for 24V.
- Dimension: 43\*10mm.

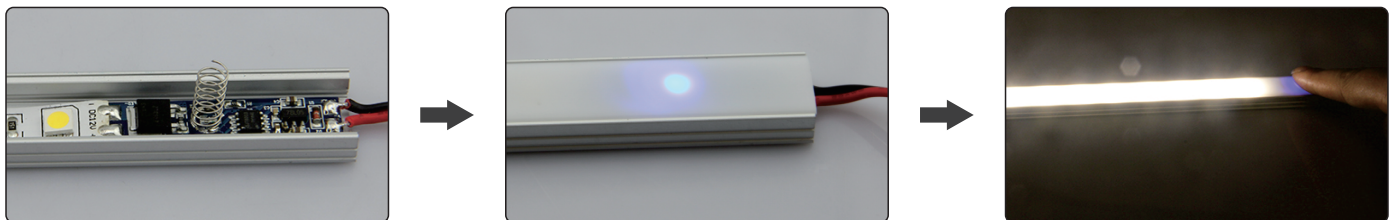
V+ --- DC input positive  
 V- --- DC input negative  
 LED+ --- Output to LED Strip positive  
 LED- --- Output to LED Strip negative



## Operations:

- The conductive spring needs to be covered by insulation material ,such as glass,plastic or ceramic material (thickness  $\leq 3\text{mm}$ ).
- Non-memory touch switch performs as below:
  - 1) Originally "Off" when the power is connected.
  - 2) Quick touch (time is less than 550ms) can turn the light on and off.

## Installation Steps:



**Note:** The function/program can be customized, made upon different needs, such as longer time for stay on, etc.