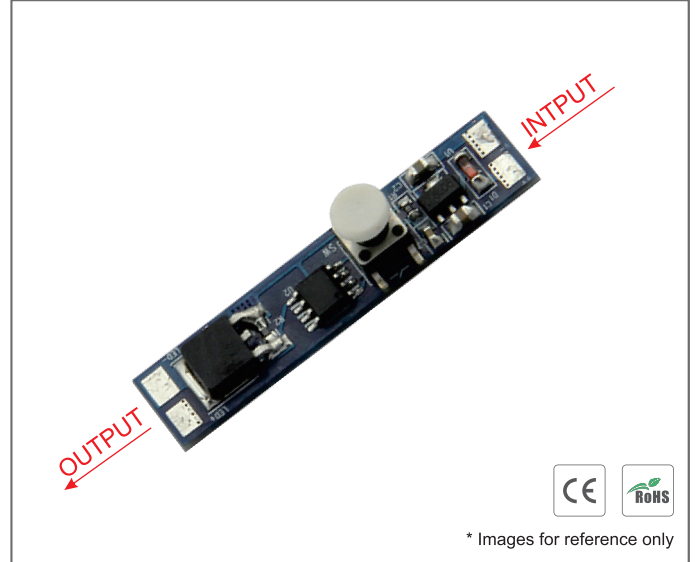


# Micro Button Switch BS001

## Functions:

- Button switch ON/OFF with dimming and memory.
- Input Voltage: 12V-24VDC.
- Output Voltage: 12V-24VDC.
- Input Current: 8A.
- Holding Press: Free dimming
- Load around 96W for 12V, and 192W for 24V.
- Dimension: 45\*10mm.

V+	---	DC input positive
V-	---	DC input negative
LED+	---	Output to LED Strip positive
LED-	---	Output to LED Strip negative

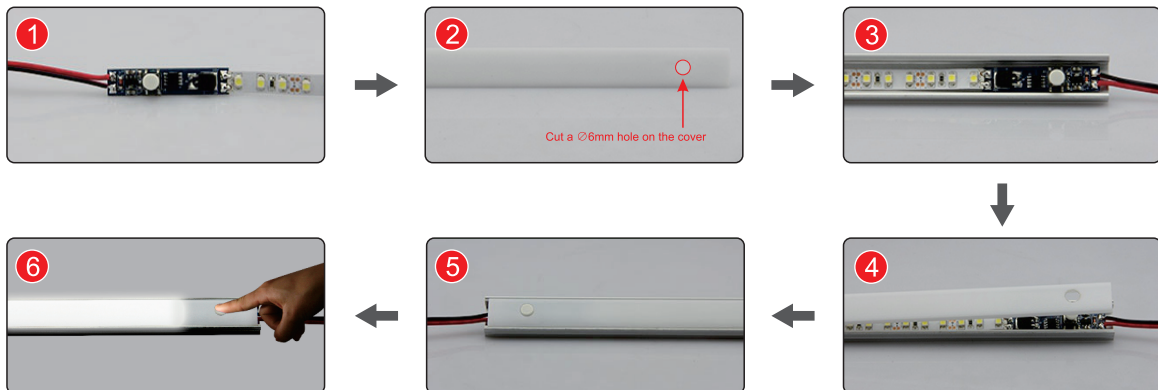


## Operations:

### Memory button switch performs as below:.

- Originally "Off" when the power is connected.
- It will reduce to the minimum brightness by holding on the button in 3 seconds, when the light is on.
- It will increase to 100% brightness by holding on the button in 3 seconds again, when the light is off.
- This sensor will memorize the brightness status in DC12V-24V.
- Quick press and hold on pressing could be chosen in anytime without any collision.

## Installation Steps:



**Note:** The function/program can be customized made upon different needs, such as with/without memory, longer time for stay on, etc.