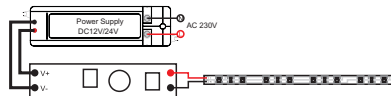


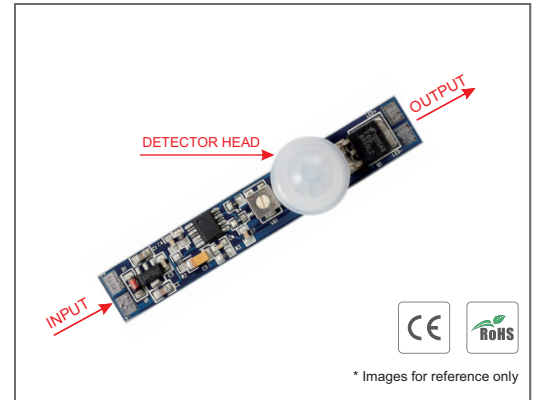
PIR Sensor Switch PIR002T

Functions:

- Automatically ON/OFF.
- Input Voltage: 12V–24V DC.
- Loading Power: 2.5A max .
- Delay Time: Adjustable about 6–70s.
- Detection Range: ≤2m.
- Load Around: 30W for 12V, and 60W for 24V.
- Dimension: 62.5*10mm.



V+ --- DC input positive
 V- --- DC input negative
 LED+ --- Output to LED Strip positive
 LED- --- Output to LED Strip negative



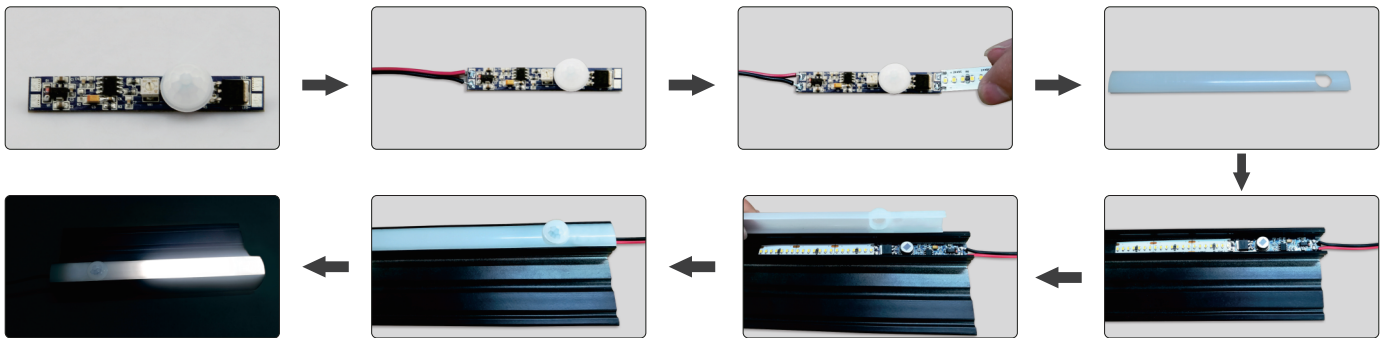
Operations:

- PIR sensor switch PIR002T can be assembled into lighting fixtures, so the lighting fixture can automatically turn on when any part of human body is approaching within 2 meters from the sensor.
- The lighting fixture equipped with this PIR sensor will stay on if the human body stays within 2 meters from the sensor.
- Advantage of PIR002T: Time adjustable (6s to 70s).

Installation Steps:

- Step 1: Cut a 10.5mm hole at the fixture.
- Step 2: Put the detector head into the 10.5mm hole.
- Step 3: Connect wires to the input end and output end of the control PCB.

LED Profile equipped with this PIR Sensor



Note: The function/program can be customized, made upon different needs, such as longer time for stay on, etc.

Notices:

1. Avoid being exposed to sunlight, auto bulb and incandescent lamp, neither to heat source (such as radiator and heater), or air conditioner, in case of faulty detection caused by ambient temperature change.
2. Sensor switches must be firmly installed, in case of faulty detection from wind shaking.
3. Don't touch the surface of detector.
4. Regularly clean the optical lens surface with wet soft cloth or cotton, in case of dust influence the sensitivity.