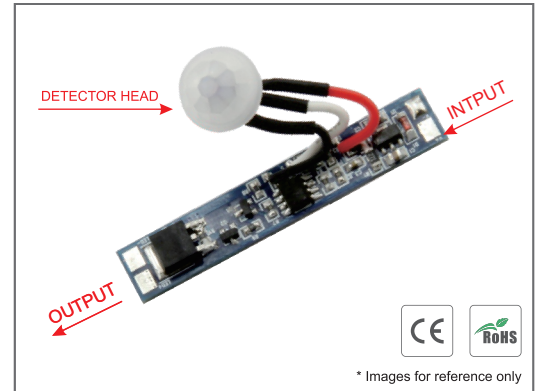


PIR Sensor Switch PIR005

Functions:

- Automatically ON/OFF .
- Input Voltage: 12V–24VDC.
- Output Voltage: 12V–24VDC.
- Loading Power: 8A Max.
- Delay Time: About 40 seconds.
- Load around: 96W for 12V, and 192W for 24V.
- Dimension: 55*10mm.

V+	---	DC input positive
V-	---	DC input negative
LED+	---	Output to LED Strip positive
LED-	---	Output to LED Strip negative



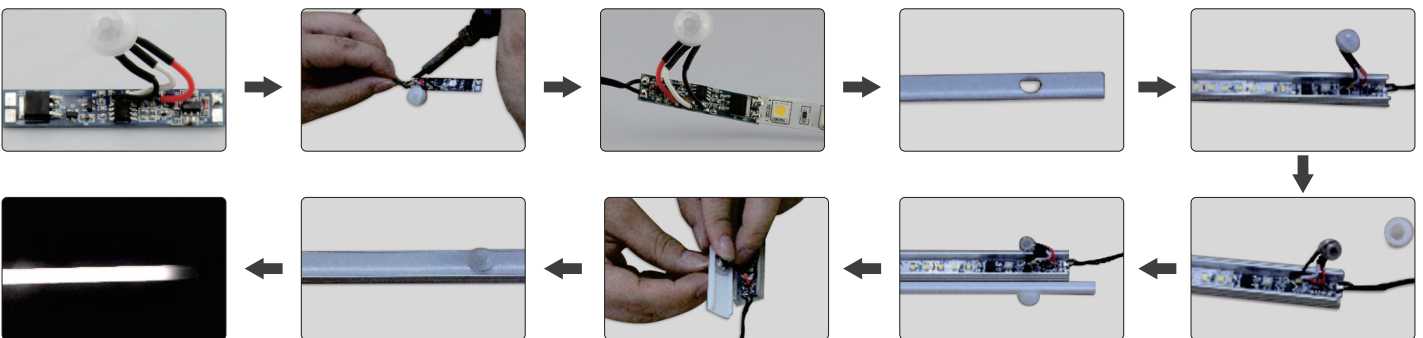
Operations:

- PIR motion sensor with brightness buffer switch on/off. PIR005 can be assembled into lighting fixtures, so the lighting fixture can be turn on automatically when any part of human body is approaching within 2 meters from the sensor.
- The lighting fixture equipped with this PIR sensor will stay on if the human body stays within 2 meters from the sensor.
- It will turn off the LED light in 40 seconds after human body move away more than 2 meters.
- Brightness buffer switch on from 0%–100% in 2 seconds, brightness buffer switch off from 100%-0% in 8–10seconds.

Installation Steps:

- Step 1: Cut a 10.5mm hole at the fixture.
- Step 2: Put the detector head into the 10.5mm hole.
- Step 3: Connect wires to the input end and output end of the control PCB.

LED Profile A1707 equipped with this PIR Sensor



Note: The function/program can be customized, made upon different needs, such as longer time for stay on, etc.

Notices:

1. Avoid being exposed to sunlight, auto bulb and incandescent lamp, neither to heat source (such as radiator and heater), or air conditioner, in case of faulty detection caused by ambient temperature change.
2. Sensor switches must be firmly installed, in case of faulty detection from wind shaking.
3. Don't touch the surface of detector.
4. Regularly clean the optical lens surface with wet soft cloth or cotton, in case of dust influence the sensitivity.