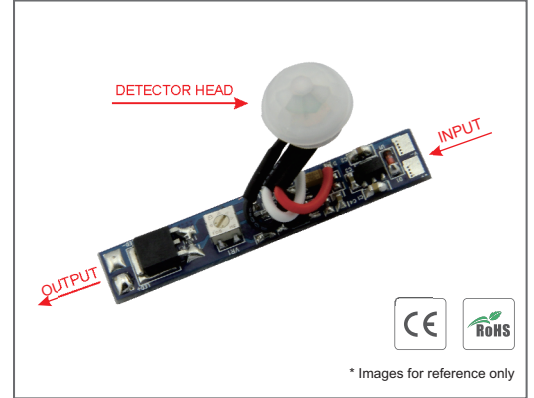


PIR Sensor Switch PIR001T

Functions:

- Automatically ON/OFF.
- Input Voltage: 12V–24VDC.
- Loading Power: 8A Max .
- Delay Time: Adjustable about 6–70 seconds.
- Detection Range: ≤ 2 meters.
- Dimension: 51*10mm.

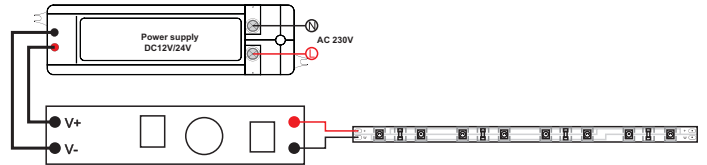
V+	-- DC input positive
V-	-- DC input negative
LED+	-- Output to LED Strip positive
LED-	-- Output to LED Strip negative



Operations:

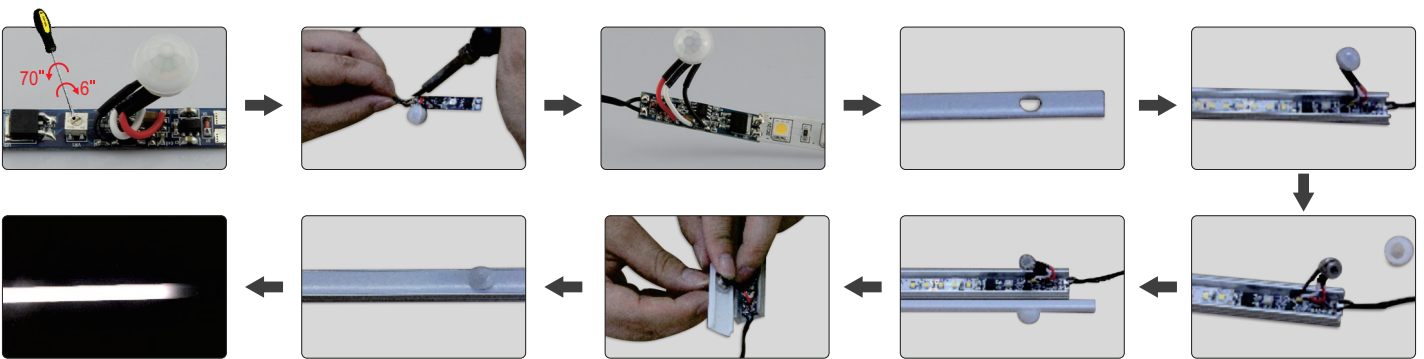
- PIR sensor switch PIR001T can be assembled into lighting fixtures, so the lighting fixture can automatically turn on when any part of human body is approaching within 2 meters from the sensor.
- The lighting fixture equipped with this PIR sensor will stay on if the human body stays within 2 meters from the sensor.

Advantage of PIR001T: Time adjustable (6s to 70s)



Installation Steps:

- Step 1: Drill a hole with a diameter of 10.5mm in PC cover.
- Step 2: Place the detector head into the hole with a diameter of 10.5mm.
- Step 3: Connect wires to the input end and output end of the control PCB.



Note: The function/program can be customized, made upon different needs, such as longer time for stay on, etc.

Notices:

1. Avoid being exposed to sunlight, auto bulb and incandescent lamp, neither to heat source (such as radiator and heater), or air conditioner, in case of faulty detection caused by ambient temperature change.
2. Sensor switches must be firmly installed, in case of faulty detection from wind shaking.
3. Don't touch the surface of detector.
4. Regularly clean the optical lens surface with wet soft cloth or cotton, in case dust influence the sensitivity.