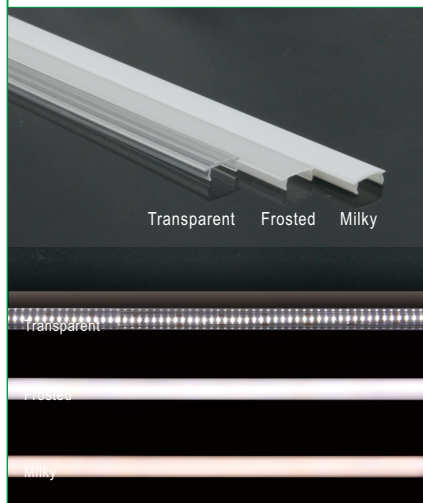


Surface Mounting LED Aluminum Profile-A1920

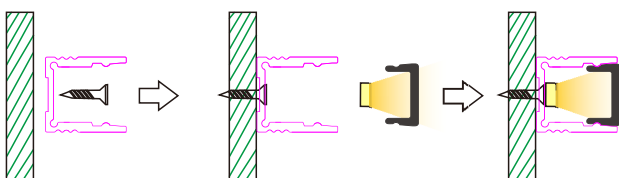


Material	Body-Aluminum, Cover-Polycarbonate(PC), End cap-Polycarbonate(PC) Stainless Steel Mounting Bracket.
Lighting Transmittance	Transparent, Milky, Frosted Cover.
Operating Temperature Range	-30°C - 60°C(-22°F~140°F)
Flammability	UL94-V2
UV Stability	Ageing resistance
Heat Stability	Under 100°C
Grade of Aluminium	6063-T5 Anodizing

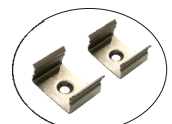
Parameters of PC Cover

Cover type	Material	Work temperature		UV resistance	Flammability	Heat Stability	Transparency	Size
		Min(°C/°F)	Max(°C/°F)					
A Milky	PC	-30/-20	60/140	✓	UL94-V2	Under 100°C	52.19%	
A Milky	PC	-30/-20	60/140	✓	UL94-V2	Under 100°C	69.93%	
A Milky	PC	-30/-20	60/140	✓	UL94-V2	Under 100°C	88.62%	

Service Environment and Installation with clips



Endcaps *2
1 with hole; 1 without hole.



Mounting clip *2
Metal